

MAXIMUS-3



JK WRANGLER

MAXIMUS-3 JK ROOF RACK/PLATFORM

**MAXIMUS-3 RHINO RACK ROOF PLATFORM/RACK IS NOT COMPATIBLE WITH JK 2-DOORS.
THIS PRODUCT IS NOT DESIGNED TO WORK WITH JK SOFT TOP ROOF.**

INSTALLATION GUIDES

PLEASE MAKE SURE YOU READ AND UNDERSTAND THE ENTIRE INSTALLATION GUIDE BEFORE YOU START. WE EXPECT YOU TO HAVE BASIC MECHANICAL ABILITIES TO PERFORM THIS INSTALLATION.

WE RECOMMEND THAT YOU SEPARATE AND IDENTIFY ALL THE PARTS AND HARDWARE KITS YOU RECEIVED WITH YOUR SHIPMENT BEFORE YOU PROCEED TO DISASSEMBLE YOUR JEEP.

Parts List

Qty

Rhino Rack Platform Kit	1
Maximus-3 Platform Legs	2
Maximus-3 Platform Legs - Logo	2
Maximus-3 Front Inner Bracket Assy RHS	1
Maximus-3 Front Inner Bracket Assy LHS	1
Maximus-3 Back Inner Bracket Assy RHS	1
Maximus-3 Back Inner Bracket Assy LHS	1
Maximus-3 Side Ladder	1
Maximus-3 Side Ladder Mount Bracket	1

Tools Required

- Metric Drive Sockets
- Metric wrenches/spanners
- Driller and Drill Bits
- Metric Allen Key # 5

Hardware Component List

Qty

Roof Rack/Platform Hardware Kit:

M8 Truss Head Bolts - Stainless Steel	8
M8 Lock Nuts	8
8 MM Flat Washers – Zinc	8
Sealing Washers	8
Rubber Washer Gasket	8
M10 Bolts – Zinc	4
M10 Channel Nuts – Zinc	4
10 MM Flat Washers – Zinc	4

Ladder Hardware Kit:

M8 Truss Head Bolts - Stainless Steel	6
8 MM Flat Washers – Stainless Steel	4
8 MM Flat Washers – Zinc	2
M8 Lock Nuts - Zinc	2
M8 Flanged Nuts – Zinc	2
M8 Channel Nuts – Zinc	8



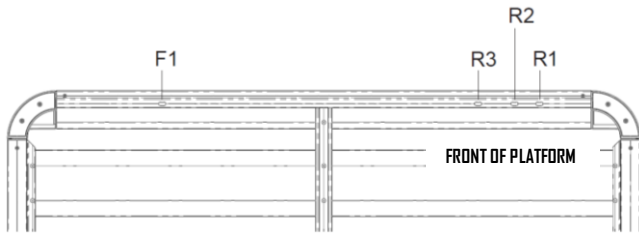
INSTALLATION STEPS

(A)- ASSEMBLE THE PIONEER PLATFORM

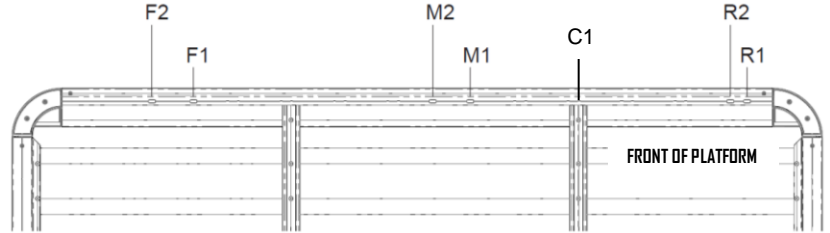
1. Lay the pre-assembled Rhino Platform upside down on a protective surface to avoid surface damage.
2. Assemble your Platform Crossbars according to Platform sizes as shown below.

Small Platform: assemble the Crossbars supplied to position F1 and R1. Total number of Crossbars = 3

Large Platform: assemble the Crossbars supplied to position F1, M2 and C1. Total number of Crossbars = 4 (including pre-assembled cross bars). Only 2 of the 3 cross bars will be needed for the assembly.



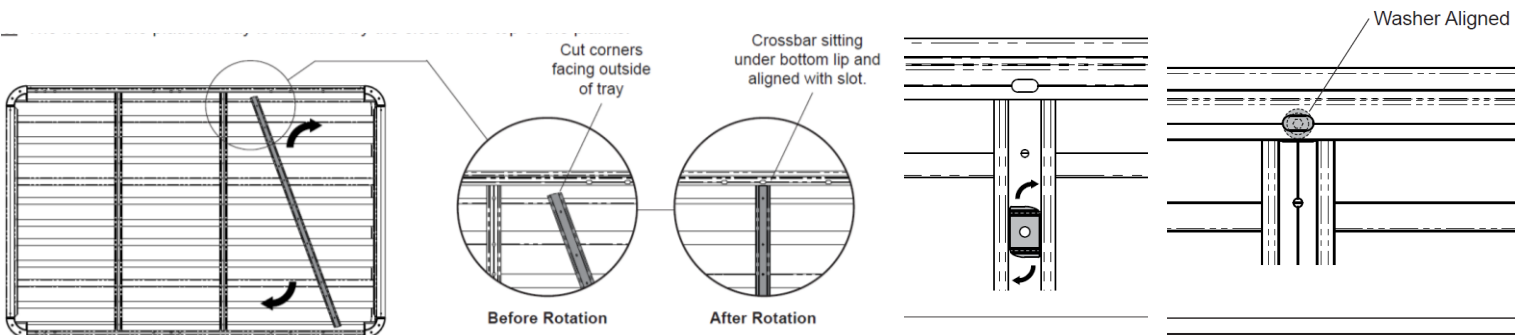
SMALL PLATFORM



LARGE

3. Insert the crossbars into the platform side bars and rotate into position as shown – note correct slots as marked below.
4. Place a channel nut in the crossbar as shown below and rotate 90 degrees. Arrange the bolts (Clamp Washer) as shown below and align to the mounting slots and fasten by hand. Repeat the same on all crossbars ends.
5. Center the crossbars over the slots and tighten the bolts with the Allen key provided.

Note: The front of the platform is identified by the rear label on the platform.



Note: Refer to Rhino Racks installation guide for the install of the hardware (Step 2 – Insert Hardware).

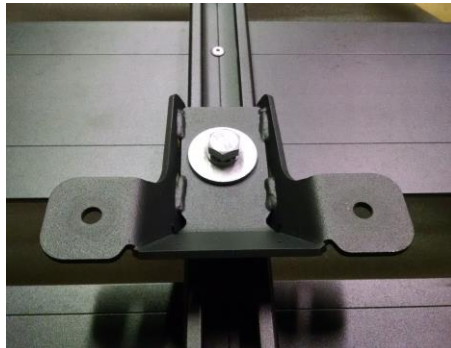
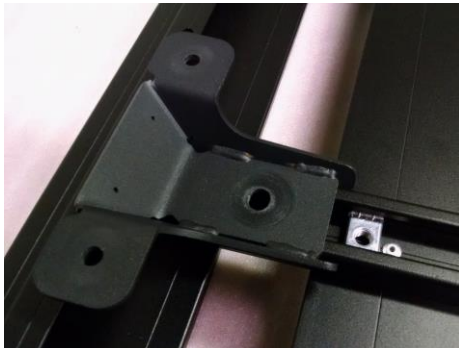
(B)- FIT MAXIMUS-3 ROOF RACK LEGS TO THE PLATFORM

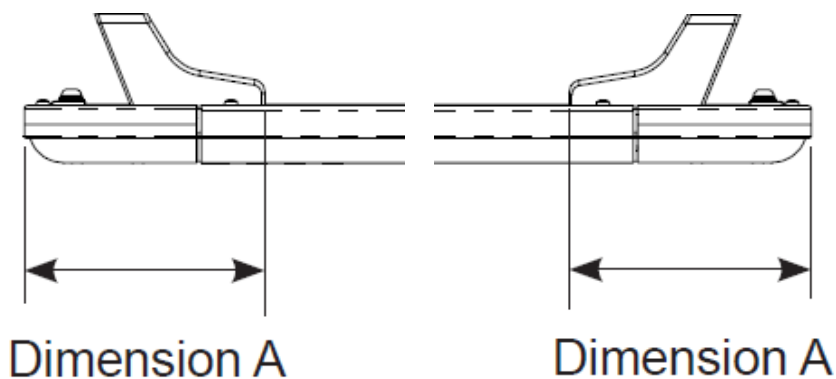
1. Fit Maximus-3 Roof Rack Legs to mounting Crossbars as follow:

Small Platform: assemble the Legs to mounting Crossbar F1 and R1 (center to center distance = 910 MM)

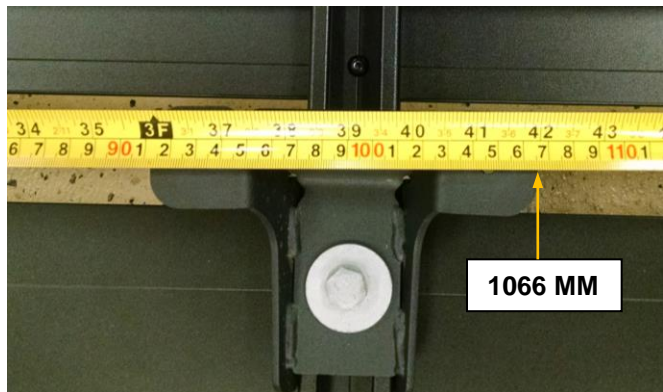
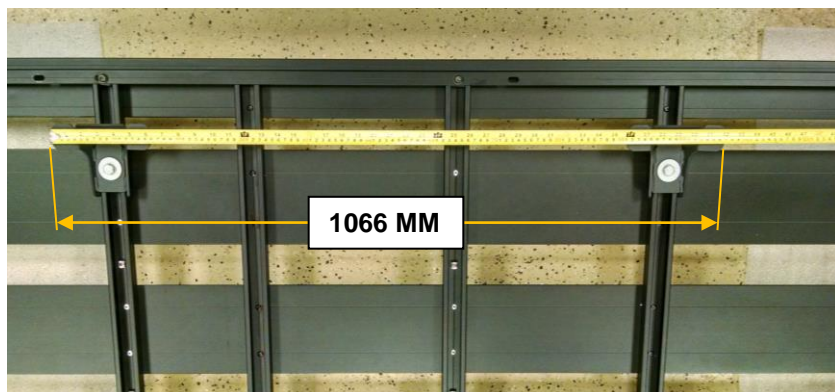
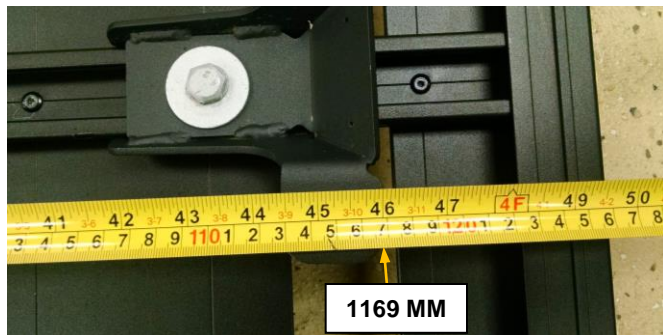
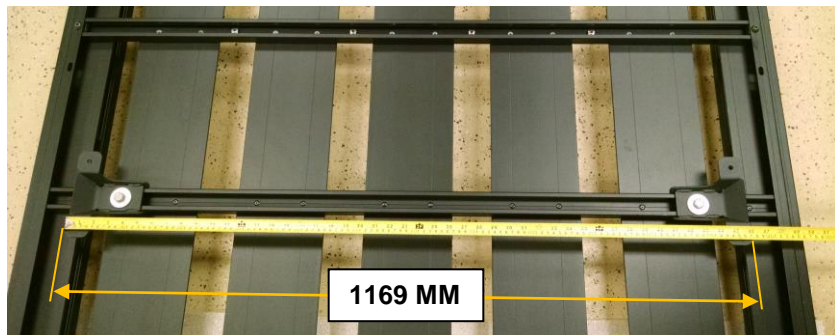
Large Platform: assemble the Legs to mounting Crossbar F1 and C1 (center to center distance = 910 MM)

2. Using the M10 bolts, Washers and Channel Nuts supplied, fit the Maximus-3 Roof Rack Legs to the Crossbars you fitted in step (A) as shown below - do not tighten for now and make sure the Channel Nuts rotate within the Crossbars as shown below. Fit all 4 legs
3. As an rough reference set dimension A to 220 MM on all four Legs using 16 MM socket and ratchet – make sure the sides of the Legs are oriented with the Crossbars - do not tighten as you may need to adjust the measurements in step 4.



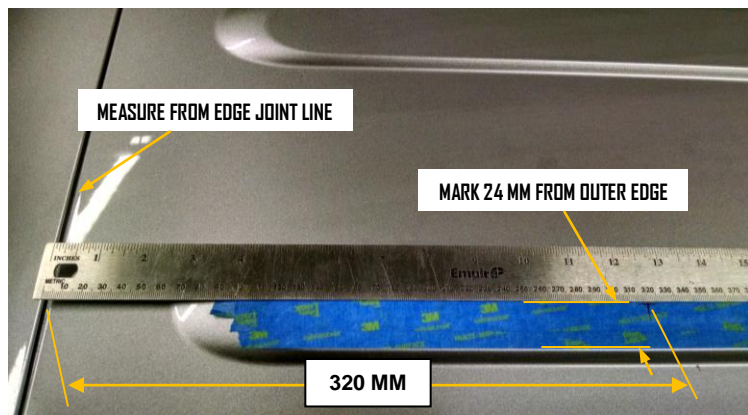


4. Measure and adjust the Legs position according to the important dimensions below – make sure you tighten all 4 bolts.



(C)- MARK AND DRILL HARDTOP MOUNTING HOLES

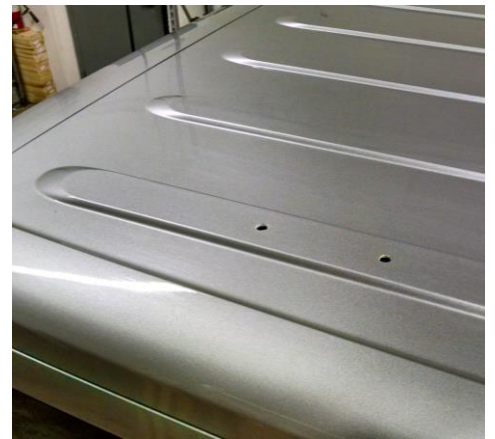
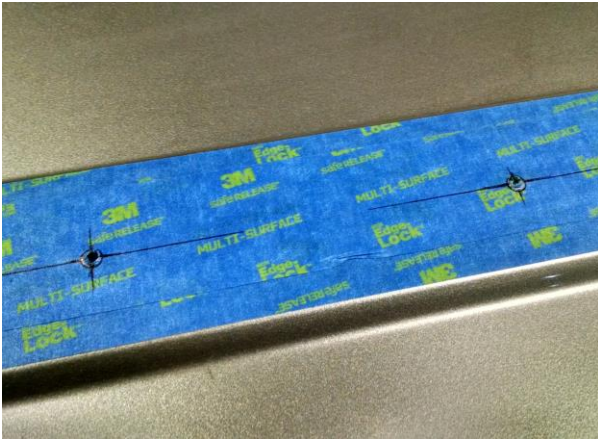
1. Carefully remove the Freedom Tops and place on a protective surface.
2. Fold the side Rear View Mirrors on both LHS and RHS doors.
3. Mask mount surface shown on the Hardtop with masking tape for marking and also for surface protection during fitment.
4. Measuring from Hardtop back panel joint line, mark the back drill holes at 320 MM from the joint edge as shown below and 24 MM from outer edge of surface.



5. With help from a second person, lift the Platform over the Jeep and carefully place on the Hardtop – slots to the rear.
6. Carefully align the holes of back Platform Legs with the back drill points you marked in step (4) above. Make sure all 4 legs line up well on the raised mounting surface as shown below. The holes should be 24 MM (1") from the outer edge of raised surface – refer to pictures below.
7. Check your measurements and position of the Platform Legs multiple times before you mark your final drill points.
8. Using a pen/pencil, mark drill points on the Hardtop.
9. Carefully lift and remove the Platform assembly and place on a protective surface.



10. With the Platform removed mark precise center points of the drill marks – there 8 drill points.
11. Drill pilot holes with a small drill bit and then drill 9 MM (3/8") final mounting holes – do not drill deep to avoid damaging
12. Remove masking tape from the mounting surface and clean the surface for final install.

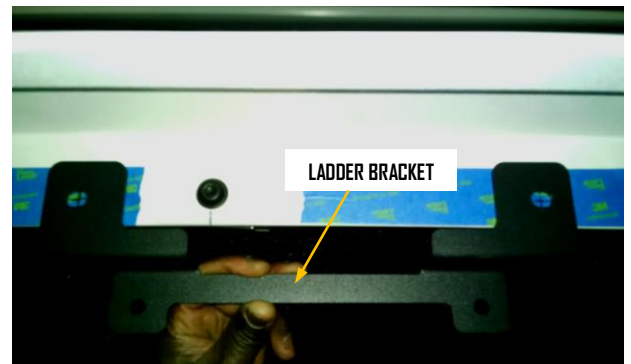
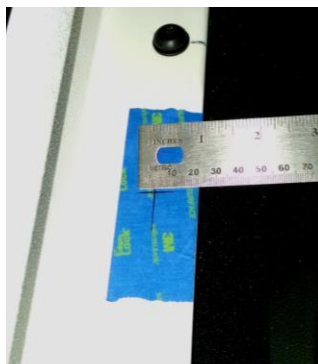


(D)- DRILL SIDE LADDER MOUNT BRACKET HOLES (OPTIONAL)

Note: The Side Ladder can be installed on either sides of the vehicle - LHS or RHS.

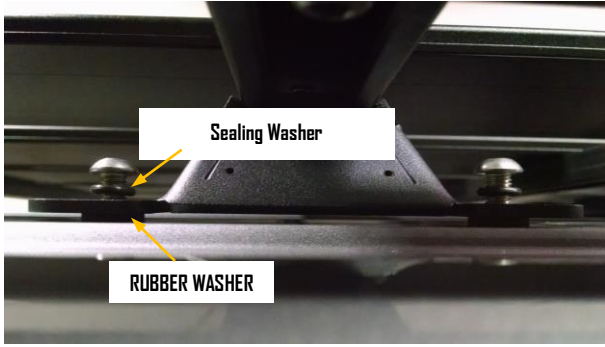
IF YOU ARE NOT INSTALLING SIDE LADDER(S) PLEASE PROCEED TO **STEP (E).**

1. Mark the back mounting hole drill point 80 MM from the middle Hardtop mounting bolt and 37 MM from the Hardtop wall. You can also measure 20 MM from the Hardtop edge.
2. Mark the front hole 274 MM from the back hole you just marked. Use the Ladder Bracket to check/verify your marking.
3. Drill pilot holes through the Hardtop and sheet metal using a small drill bit then drill final holes with a 9 MM (3/8") drill bit.
4. Clean drilling debris and dust with a vacuum cleaner.



(E)- MOUNT THE PLATFORM ASSEMBLY ONTO THE HARDTOP

1. With help from a second person, lift the Platform assembly and carefully place on the Hardtop - slots side to the rear.
2. Align the holes and insert mounting Stainless Steel Bolts, Sealing Washers and Rubber Washers through the Hardtop as shown.

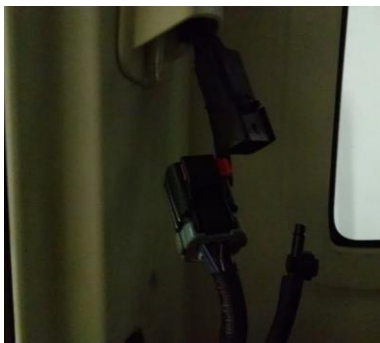


(F)- INSTALL MAXIMUS-3 INTERNAL MOUNTING BRACKETS & SIDE LADDER BRACKET

1. Unbolt the Hardtop – there are 2 bolts in the front and 6 bolts in the back.
2. Unbolt the overhead Sound Bar, disconnect the interior light wiring connector and remove the Sound Bar.



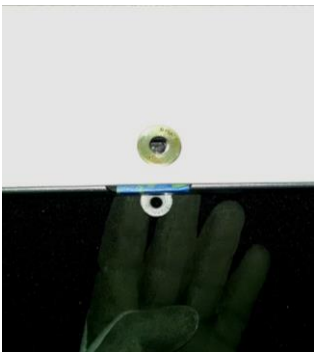
3. Disconnect the back windshield wiper wire harness and drain hose in the back.
4. With help from a second person lift front of the Hardtop and place padded wooden spacers between as shown.



5. Unzip the roll bar padding to reveal factory brace brackets. Remove the bolts shown below and keep for install later.
6. On the front passenger side brace, remove the Satellite Antenna shown, disconnect wiring and save for relocation later.
7. Disassemble the Internal Brackets (Bearing Brackets) to prepare for assembly. Note delivery assembled setup.
8. Place the front lower Bearing Brackets over roll cage brace brackets and align the holes. Mark bracket tabs position on the padding and cut access slits through the padding with a knife. Repeat on the other side. Refer to pictures below.
9. Now insert the brackets through the slits you cut in the pads, add the thick washers underneath the brackets and bolt to the roll cage braces with factory bolts. Tighten all bolts.



10. Insert the Ladder Mount Bracket between the Hardtop and the body. Align the holes and use tape to hold in position. Make sure the holes line up – make corrections to the holes as necessary.
11. Remove the wooden spacers you put in in step (4) and carefully lower the Hardtop to its aligned position.
12. Re-install the Hardtop bolts – 2 bolts in the front and 6 bolts in the back.
13. Bolt the Ladder Bracket to the body as shown using the bolts, washers and flanged nuts supplied.



14. Align the Upper Internal Brackets to platform legs bolts from inside the Hardtop and loosely secure with lock-nuts and washers – use a helping hand to hold the Stainless Steel bolts from outside with an Allen key while you fasten the nuts. Adjust/align to the lower brackets and fasten horizontal bolts using an Allen Key.
15. Place the lower Back Internal Brackets over the roll cage braces, cut slits in padding and install the Brackets as shown. Note: horizontal bracket bolts are to be tightened last using the Allen key.



16. Check and tighten all bolts and zip the Roll Cage paddings.

(G)- INSTALL THE SIDE LADDER (OPTIONAL)

1. Insert two M8 Channel Nuts in the side bar through the access slot in the back. Refer to pictures bellow.
2. Place the Ladder over the side bar, align Channel Nuts and loosely secure with M8 Stainless Steel Bolts and Washers.
3. Align the bottom of the ladder to the holes on the Ladder Bracket you installed in step (F) and loosely secure with M8 Stainless Steel Bolts and Washers.



4. Check that the Ladder seats well on the Platform side bar and tighten the bolts.
5. Align the bottom brackets and tighten using an Allen Key and a 13 MM ratchet – push on the ladder back leg to align.



(H)- RELOCATE THE SATELLITE RADIO ANTENNA (OPTIONAL)

1. Relocate your satellite antenna following the supplement Satellite Antenna Relocation Installation Guides.



Your installation is complete. If you have questions regarding this installation please contact us at info@maximus-3.com or call 248 821 6654.