

# MAXIMUS-3



## JL RUBICON CLASSIC & “SLP” HOOP (Steel Bumper Group)

### INSTALLATION GUIDES

PLEASE MAKE SURE YOU READ AND UNDERSTAND THE ENTIRE INSTALLATION GUIDE BEFORE YOU START. WE EXPECT YOU TO HAVE BASIC MECHANICAL ABILITIES TO PERFORM THIS INSTALLATION.

WE RECOMMEND THAT YOU SEPARATE AND IDENTIFY ALL THE PARTS AND HARDWARE KITS YOU RECEIVED WITH YOUR SHIPMENT BEFORE YOU PROCEED TO DISASSEMBLE YOUR JEEP.

#### **Component List:**

JL Classic or “SLP” Hoop	Qty 1
Bumper Reinforcement Bracket RHS	1
Bumper Reinforcement Bracket LHS	1

#### **Tools Required:**

- Metric Wrenches (13MM, 16MM)
- Torx Bit (T45)
- Flat Screw driver

#### **Hardware Kit:**

##### **(hoop to bumper)**

M8x30 Button Socket Bolt – Black S.S.	Qty 4
M8 Flange Nut - Zinc Plated	4
M8 Washer – Zinc Plated	4
Rubber Isolators - Black	4

##### **(reinforcement bracket to frame)**

M10 Hex Bolt – Zinc Plated	Qty 2
M10 Washer – Yellow Zinc Plated	2

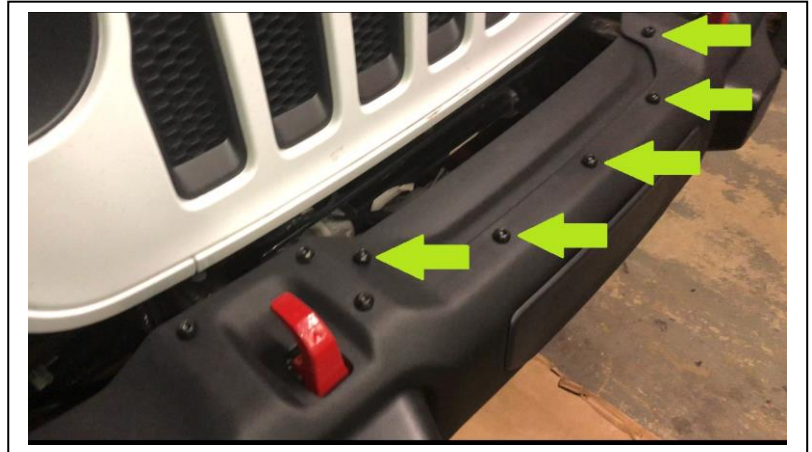


## Installation

IF YOU HAVE A WINCH ALREADY INSTALLED GO TO STEP (2)

### 1- Remove the Filler Trim Molding and Winch-delete Top Plate.

- Remove the long plastic trim molding between the bumper and the grill by removing the plastic clips/pins using a flat screw driver. Save for reinstall later if you are not installing a winch.
- Remove the Winch-delete plate using a T45 torx bit and ratchet. Save the plate for later if not installing a winch.

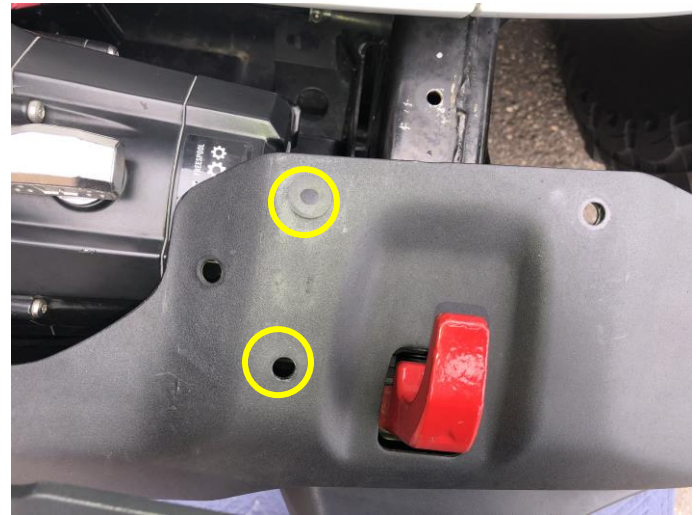
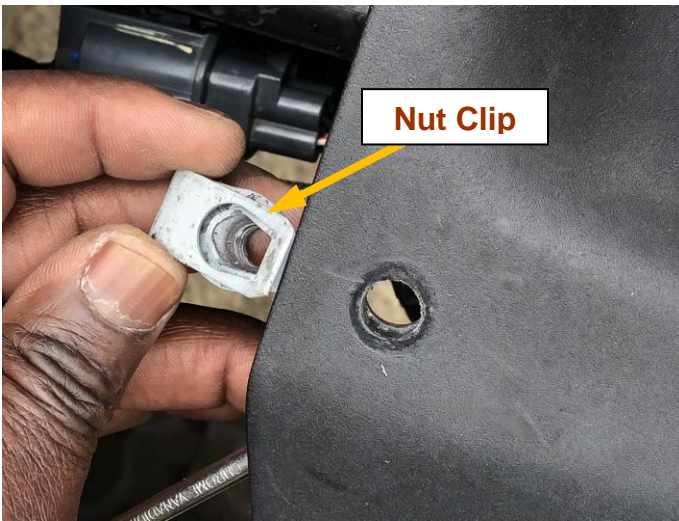


### 2- Remove factory bolts and u-nut clips from mounting points on the bumper.

- Remove 4 factory bolts shown below using a T45 torx bit and ratchet. Save the bolts for reuse later.
- Using a flat screw driver carefully pry the bumper under sheet metal open and remove the back u-nut clips using a small flat screw driver as shown in the image below (*you can also use a pair of pliers to pull it out as you will not need them again for this installation*). Do the same on all 4 hoop mounting points shown, 2 per side.

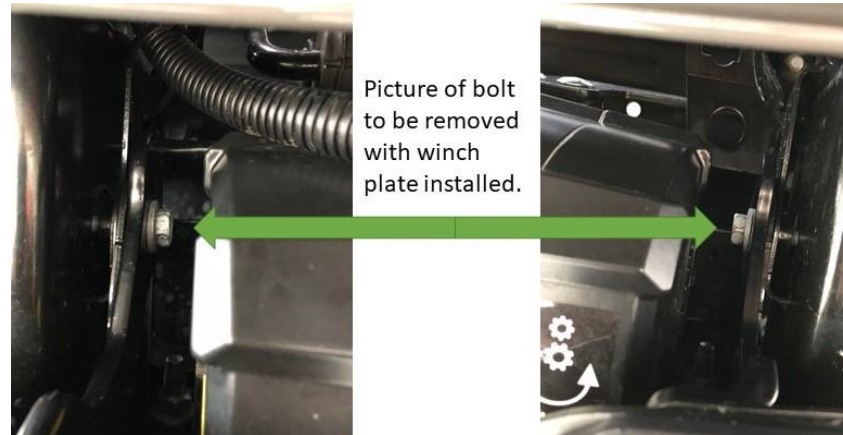






### 3- Install Bumper Reinforcement Brackets.

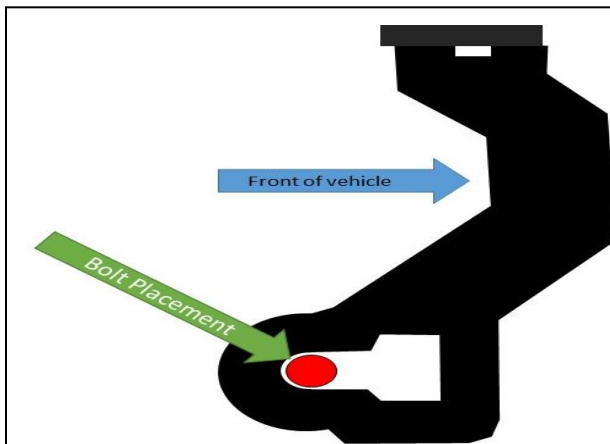
- Remove the inside bumper mounting bracket bolt (M10 Hex Bolt, 16mm) from both frames.
- Note orientation of reinforcement brackets (see below)
- Install the Reinforcement Bracket to the inside of the frame. Without a winch: use factory bolt. With a winch: use provided M10 bolt/washer. Leave loose for now.



vv (picture of frame bolt locations without winch) vv

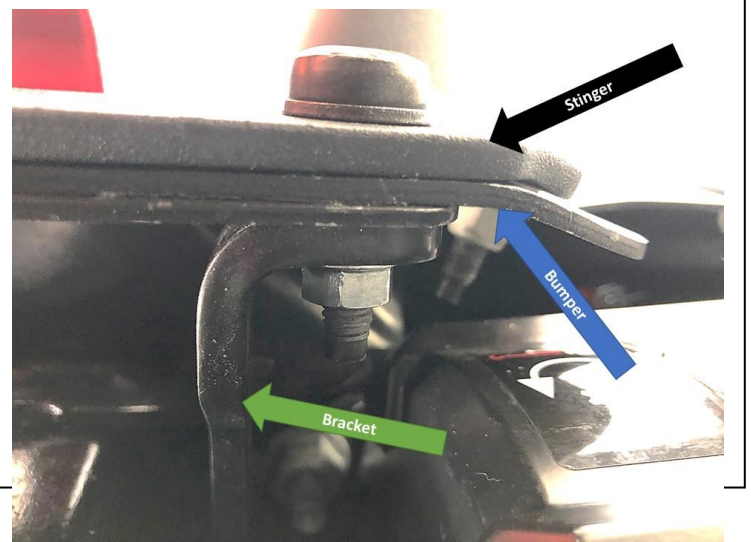


\*\* The reinforcement bracket's top bend goes to the inside. \*\*



### 3- Bolt your HOOP to the bumper and reinforcement brackets.

- Place provided rubber washers in between the hoop and the bumper (at all 4 mounting points)
- Use the factory Torx bolts and provided flange nuts. Or the longer provided M8x30 bolts if necessary.
- Tighten ALL hardware associated with the Hoop and Reinforcement Brackets.



### 5- Reinstall your Winch-Delete Plate and Filler trim Molding (if No winch is being installed)

Reverse the process from step #1

### 6- Install your Auxiliary Lights or LED Bar (Optional)

Install your Light Bracket(s) onto the bumper using the factory M8 bolts or hardware provided. Use M8 Flanged Nuts from underside the bumper. And the 2 M6 nuts provided, 1 on each bracket (*you do not need the nuts for non-winch install*). Install your LED or auxiliary lights following the instructions provided with the lights. Make sure you adjust the lights and tighten the mounting nuts/bolts.



Your installation is complete. If you have questions regarding this installation, please contact us at [info@maximus-3.com](mailto:info@maximus-3.com) or the phone number below.