

MAXIMUS-3



JL WRANGLER (PLASTIC/STEEL BUMPER)

REAR TOW LOOPS

INSTALLATION GUIDES

PLEASE MAKE SURE YOU READ AND UNDERSTAND THE ENTIRE INSTALLATION GUIDE BEFORE YOU START. WE EXPECT YOU TO HAVE BASIC MECHANICAL ABILITIES TO PERFORM THIS INSTALLATION.

WE RECOMMEND THAT YOU SEPARATE AND IDENTIFY ALL THE PARTS AND HARDWARE KITS YOU RECEIVED WITH YOUR SHIPMENT BEFORE YOU PROCEED TO DISASSEMBLE YOUR JEEP.

Parts List:

Qty

Rear Tow Loop LHS	1
Rear Tow Loop RHS	1
Hardware Kit	1

Tools Required:

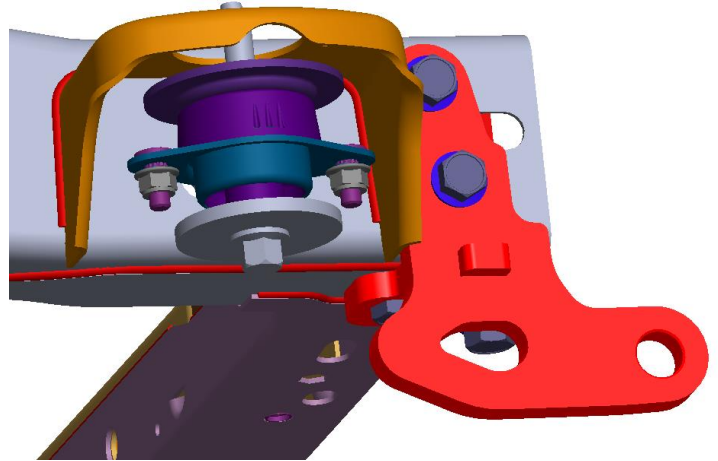
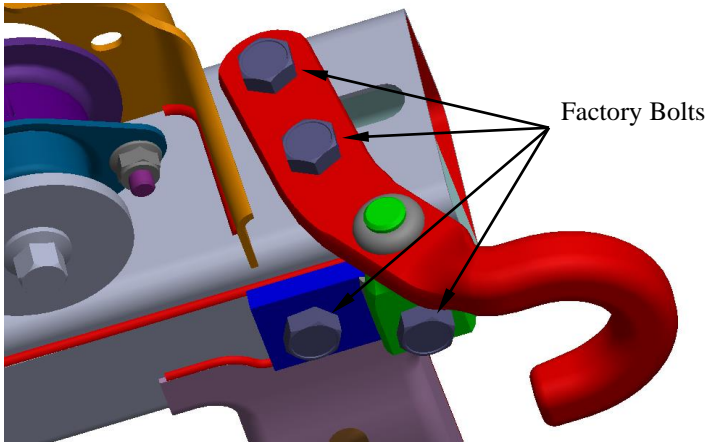
Wrench and Metric Sockets 21 MM, 22 MM
Cut-off Wheel (Grinder)



INSTALLATION STEPS

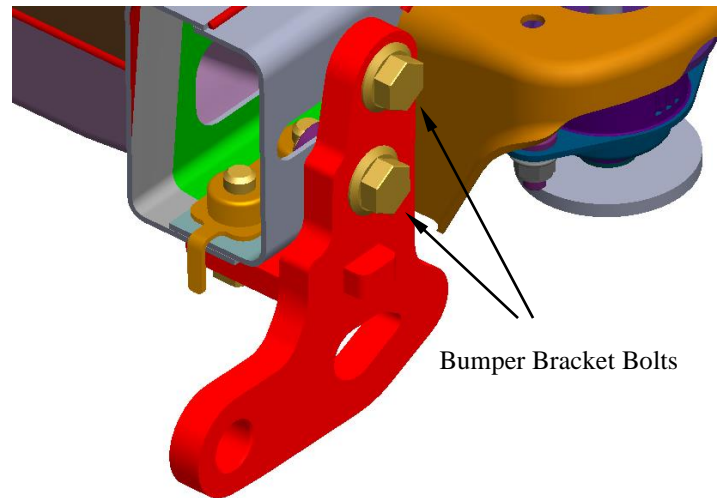
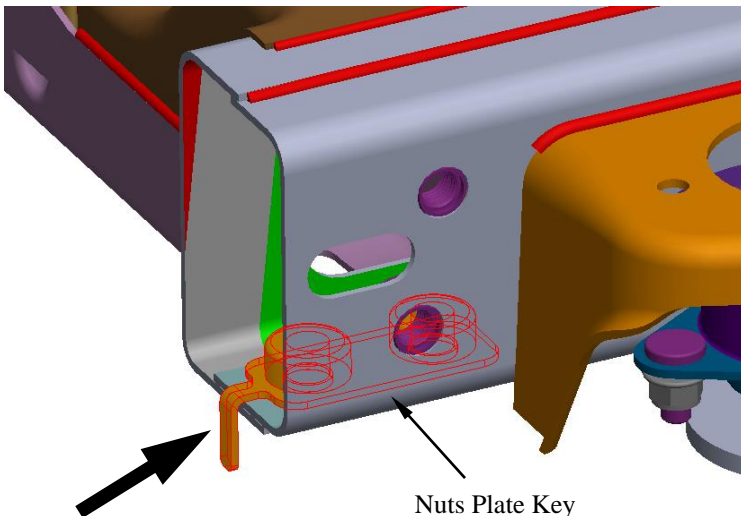
(1)- INSTALL DRIVER SIDE TOW LOOP:

- A. Using 21 MM Socket, reach under the bumper on the driver side, remove the 2 side bumper bracket bolts – save hardware for reuse.
Note: if you have a factory Tow Hook option, remove 2 side bolts, 2 bottom bolts and remove the factory tow hook and spacer - save all hardware for reuse.
- B. Align Maximus-3 Rear Tow Loop LHS to factory mounting points and bolt in place using 4 factory bolts you removed in Step (A).



(2)- INSTALL PASSENGER SIDE TOW LOOP:

- A. Using 21 MM Socket, reach under the bumper on the passenger side, remove the 2 side bumper bracket bolts – save hardware for reuse.
- B. Insert the nuts plate key into the chassis frame going **up** through the gap between the bumper and chassis frame; align the nuts to 2 mounting holes in the bottom of chassis frame.
- C. Align Maximus-3 Rear Tow Loop RHS to side and bottom mounting points and bolt in place using 2 factory bolts you removed in Step (A) and 2 bottom bolts (22 MM socket) and washers provided with the kit.
Note: you may need to notch the bumper for clearance if you have factory plastic bumper or aftermarket steel bumper.



(3)- TIGHTEN ALL BOLTS

Using a torque wrench tighten all bolts to **94 ft. lbs.**

Your installation is complete. If you have questions regarding this installation please contact us at info@maximus-3.com or call 248 821 6654.