

MAXIMUS-3



JL RUBICON STINGER BAR (Steel Bumper Group)

INSTALLATION GUIDES

PLEASE MAKE SURE YOU READ AND UNDERSTAND THE ENTIRE INSTALLATION GUIDE BEFORE YOU START. WE EXPECT YOU TO HAVE BASIC MECHANICAL ABILITIES TO PERFORM THIS INSTALLATION.

WE RECOMMEND THAT YOU SEPARATE AND IDENTIFY ALL THE PARTS AND HARDWARE KITS YOU RECEIVED WITH YOUR SHIPMENT BEFORE YOU PROCEED TO DISASSEMBLE YOUR JEEP.

Component List:

JL Stinger Bar
Bumper Reinforcement Bracket RHS
Bumper Reinforcement Bracket LHS

Qty

1
1
1

Hardware Kit:

M8 Flanged Nut – Zinc Plated
M8 Nylock Nut - Zinc Plated
M8 Washer – Zinc Plated
M10 Hex Bolt – Zinc Plated
M10 Washer – Zinc Plated
Rubber Isolators - Black

2
4
2
2
2
6



Tools Required:

- Metric Wrenches (13MM, 16MM)
- Torx Bit/key (T45)
- Flat Screw driver



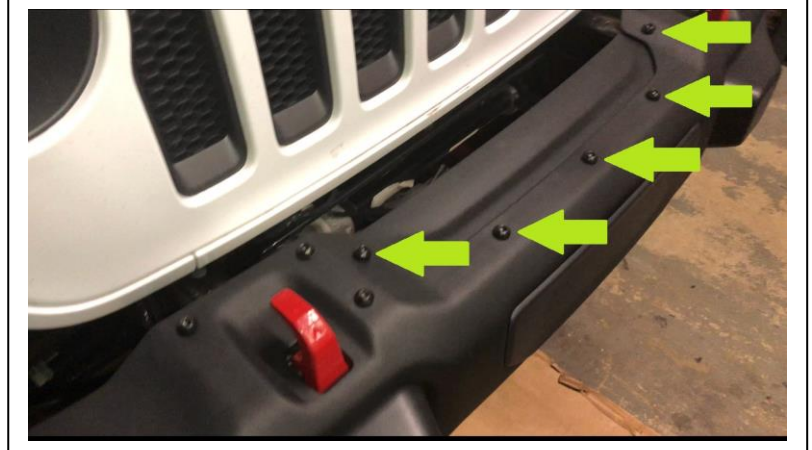
Installation

IF YOU HAVE A WINCH ALREADY INSTALLED GO TO STEP (2)

1- Remove the Filler Trim Molding and Winch-delete Top Plate.

Remove the long plastic filler trim molding between the bumper and the grille by removing the plastic clips/pins using a flat screw driver. Save for reinstall later if you are not installing a winch.

Remove the Winch-delete plate using a T45 torx bit and ratchet. Save the plate for reinstall later if you are not installing a winch.

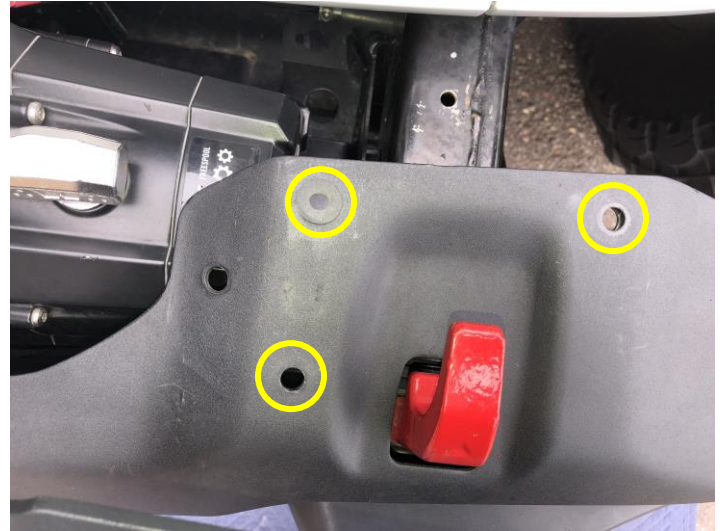
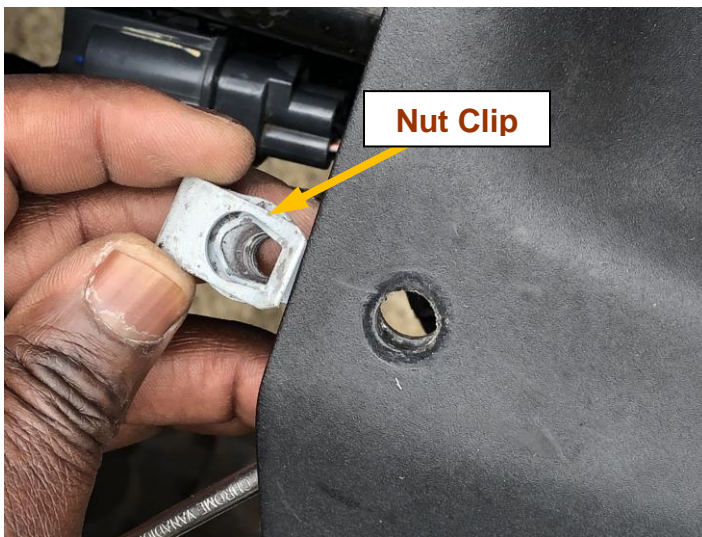


2- Remove factory bolts and u-nut clips from mounting points on the bumper.

Remove 6 factory bolts shown below using a T45 torx bit and ratchet. Save the bolts for reuse later.

Using a flat screw driver carefully pry the bumper under sheet metal open and remove the back u-nut clips using a small flat screw driver as shown in the image below (*you can also use a pair of pliers to pull it out as you will not need them again for this installation*). Do the same on all 6 mounting points shown, 3 on each side.

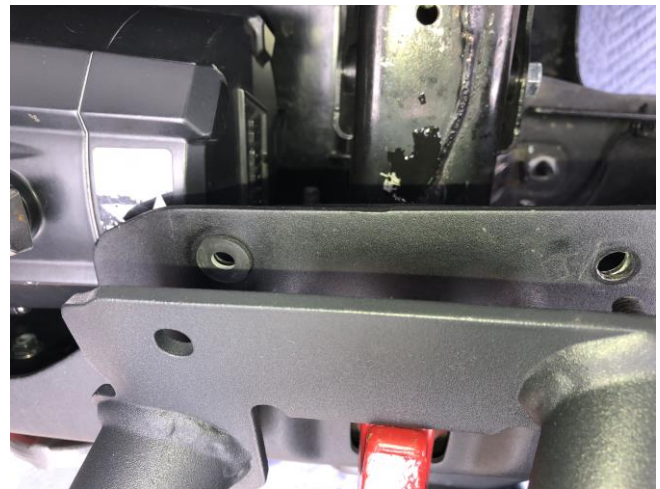




3- Bolt your Stinger Bar onto the bumper.

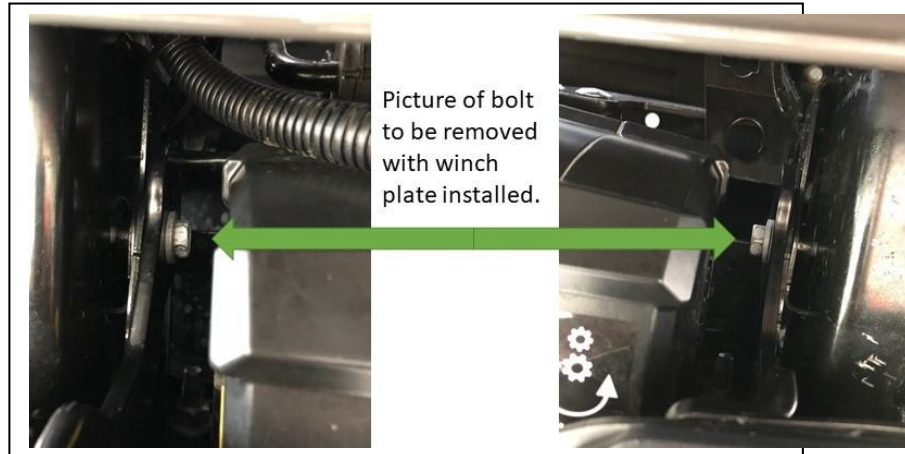
Place the Rubber Washers provided with your hardware kit on all 4 Stinger studs and remaining 2 on the holes on the bumper. Note: you need 1 washer between the Stinger and the bumper at each mounting point. See pictures below.

Reaching from underside of the bumper, now thread the Nylock Nuts provided onto each mounting stud adding a washer first to go between – do not tighten for now.



4- Install Bumper Reinforcement Brackets.

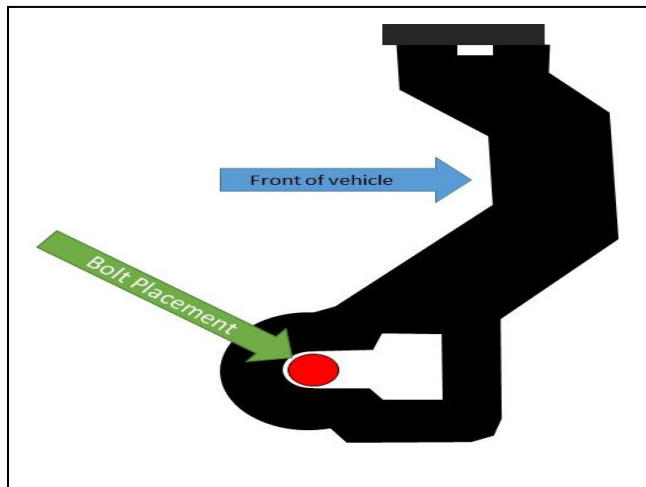
- Remove the inside bumper mounting bracket bolt (M10 Hex Bolt, 16mm) from both frames.
- Now align the Reinforcement Bracket to the third blank hole on the bumper, coming from the underside of bumper and from inside of chassis frame. NOTE orientation of bracket and proper location for lower mounting bolt.



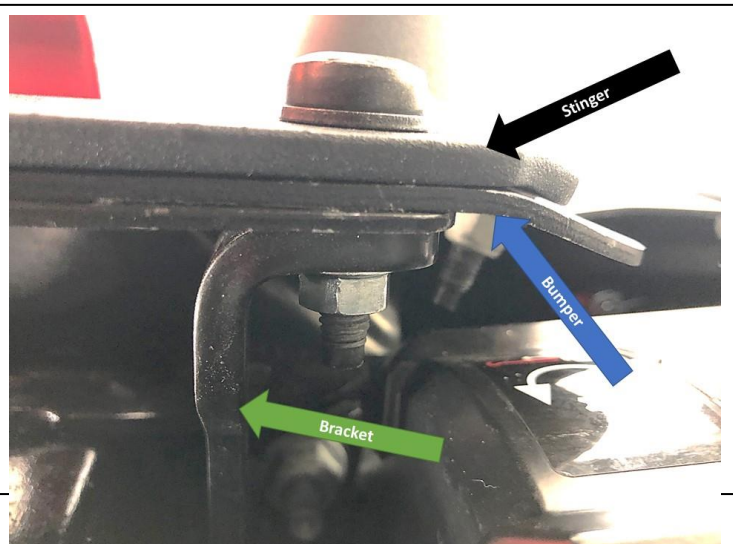
vv (picture of frame bolt locations without winch) vv



(The top bend on Reinforcement Bracket points inward)



- Loosely fasten the top part of the bracket using factory M8 bolt from and M8 flanged nut (13mm). Ensure the rubber washer is between the stinger and frame. Insert M10 hex bolt (16mm) and washer through bottom part of the bracket and thread into welded nut in the chassis sub-frame. Repeat for the other bracket.
- UPPER BOLTS: Reuse factory hardware if possible. Or use our provided M8x25 bolts.
LOWER M10 HEX BOLT: if you have a winch already installed, a slightly shorter replacement M10 hex bolt & Washers have been provided to make installation easier.
- Tighten all hardware associated with the Stinger and Reinforcement Brackets.



5- Reinstall your Winch-Delete Plate and Filler trim Molding if you are not installing a winch.

Reverse the process from step #1

6- Install your Auxiliary Lights or LED Bar (Optional)

Install your Light Bracket(s) onto the bumper using the factory M8 bolts or hardware provided. Use M8 Flanged Nuts from underside the bumper. And the 2 M6 nuts provided, 1 on each bracket (*you do not need the nuts for non-winch install*). Install your LED or auxiliary lights following the instructions provided with the lights. Make sure you adjust the lights and tighten the mounting nuts/bolts.



Your installation is complete. If you have questions regarding this installation, please contact us at info@maximus-3.com or the phone number below.