

# RTD Flash Tool Instruction for Jeep ,Chrysler and Dodge

**Insert  
Mod Number  
Label Here**

TO QUALIFY FOR A FREE PCM UNLOCK AT HP TUNERS ALL SECTIONS LISTED BELOW MUST BE FILLED OUT BY THE CUSTOMER AND CLEARLY LEGIBLE **(2012-2014 JEEP JK DO NOT NEED PCM UNLOCK):**

- ☐ LABEL THE OUTSIDE OF THE SHIPPING BOX WITH THE MOD NUMBER LISTED ON THE LABEL ABOVE.
- ☐ CUT OUT THIS FRONT PAGE AND MAKE A COPY FOR YOUR RECORDS.
- ☐ INCLUDE THIS ORIGINAL COPY INSIDE THE PCM SHIPPING BOX ALONG WITH YOUR PCM.
- ☐ MAIL TO: **ATT: Dodge Mod Service**  
**HP Tuners, LLC**  
**700 Eastwood Ln**  
**Buffalo Grove, IL 60089**

**CUSTOMERS ARE RESPONSIBLE FOR ALL SHIPPING EXPENSES FOR THIS PACKAGE TO HP TUNERS. HP TUNERS WILL COVER RETURN SHIPPING (INSIDE THE CONTINENTAL US).**

VIN: \_\_\_\_\_

CUSTOMER NAME: \_\_\_\_\_

PHONE NUMBER: \_\_\_\_\_

EMAIL: \_\_\_\_\_

RETURN ADDRESS:

---

---

---

# NOTES

## **NOTE TO CUSTOMERS WITH MODIFIED VEHICLES:**

**The Magnuson calibration included with this kit is intended to work on stock vehicle configurations, including stock trim levels and stock OEM vehicle options. Modifications to your stock vehicle including, but not limited to, engine, flywheel, clutch, torque converter, transmission, wheels, tires, axles, gears, driveshafts, induction system, exhaust system and additional weight (ie. bumpers, racks, etc.) can have a significant impact on your vehicle's calibration and may require modifications to our calibration as supplied.**

**While we attempt to minimize the need for modifications during our development process, it is impossible for our team to account for all possible build variations/combinations, and in some cases it may be necessary for you to supply an additional element of customization for your vehicle—custom calibration—and to work, at your own direction and expense, with a local service facility to address your unique combination of hardware and make calibration adjustments as necessary.**

**Please be aware that standard product warranties and governmental emissions certifications are predicated on stock vehicle configurations, and vehicle modifications and calibration changes may affect or even void powertrain warranty and emissions certification status (such as CARB emissions certification). It is the sole responsibility of the customer making a warranty claim to prove that any vehicle modifications and calibration changes were within warranty. It also is the sole responsibility of the customer to determine if the modifications and changes comply with all local, state and federal emissions standards.**

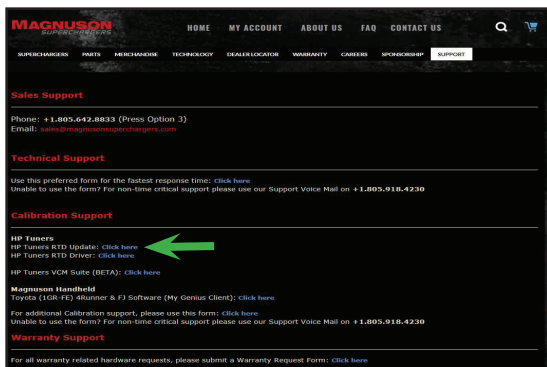
**This installation requires a PC running Windows 10 and needs to have internet access at the vehicle. Apple Products are not supported and there are issues with running older non supported versions of Windows.**

**Please take the vehicle to a dealer and verify that the vehicle is on the latest calibration offered from the OEM before proceeding.**

1. Start by going to [www.magnusonsuperchargers.com](http://www.magnusonsuperchargers.com) and click on the "Support" tab at the top of the page.



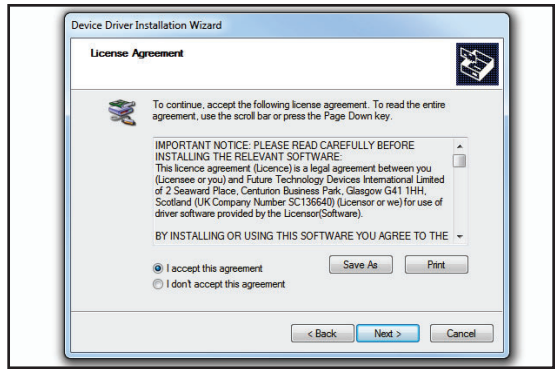
2. Click on the HP Tuners RTD Update link under Calibration Support. Also click on the HP Tuners RTD Driver link.



3. Once you have downloaded the RTD Flasher software follow the prompts for the setup wizard.



4. Follow the installation Wizard to install the device drivers for the RTD flash tool.



5. Gather the provided RTD flash tool and USB 2.0 connection cable. Connect this to your laptop.

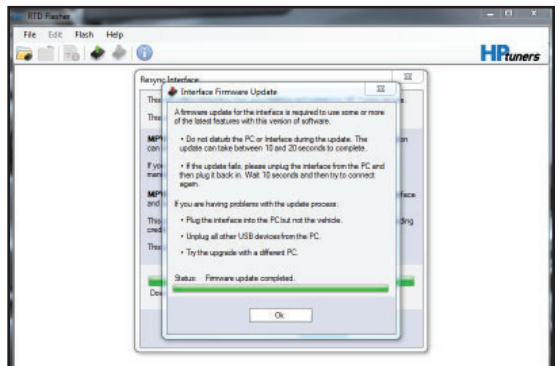


6. Now select "Help" and then Resync Interface.

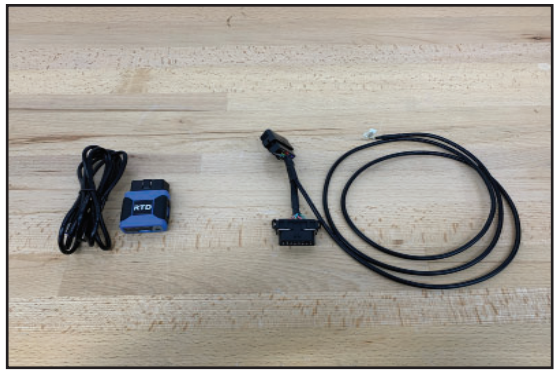
**You must Resync your RTD flash tool before use.**



7. Follow any on screen directions for the Interface Firmware Update. You should see a "Firmware update completed." statement once the process is done.



8. Gather the supplied HP Tuners RTD flash tool and cables shown. The cable on the right is the bypass cable and it is not included in all kits.



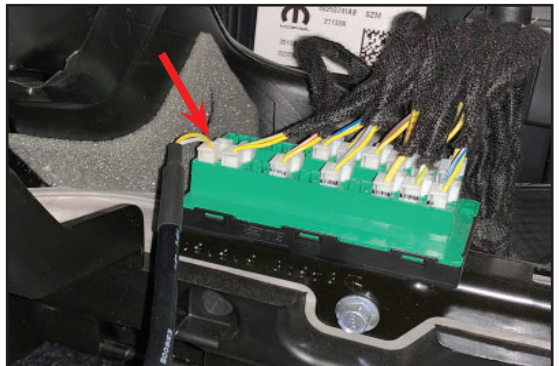
9. **The following 4 steps are for 2018+ vehicles that need the bypass cable.** Open the glovebox and push the tab at the rear to allow the glovebox to open it all the way exposing the vehicle wiring harness.



10. Locate the green connector shown.



11. Take the supplied bypass cable shown and connect the white connector as shown at the red arrow location. Route the cable along the base of the dash towards the OBD connector. Use zip ties to secure it out of the way.





12. Plug the end of the supplied connector into the ODB port. (The other end will be used when flashing with the RTD device.)



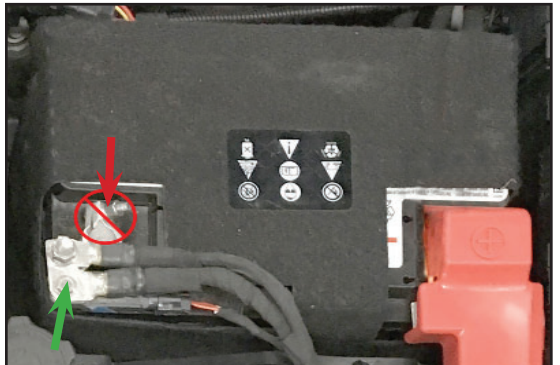
13. For 2012-2017 vehicles plug the RTD directly into the ODB port.



14. Connect a battery charger to the vehicle's battery to ensure that you have at least 12V at all times while following these instructions.



15. For Jeep owners you must attach the battery charger ground wire prior to the IBS unit at the green arrow location. **DO NOT** connect the ground of the charger to the pole clamp shown with the red arrow.



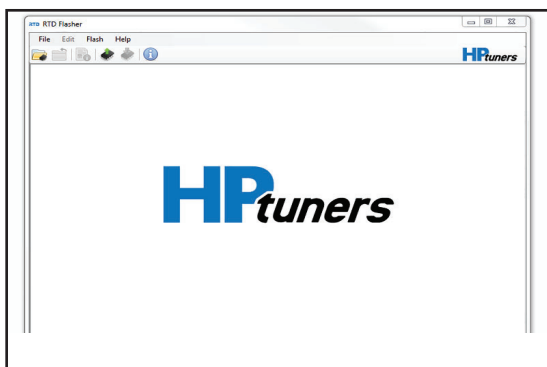
16. Using the RTD Flasher program you will now read the stock file information and the tool will upload the proper supporting file for your vehicle onto your laptop.



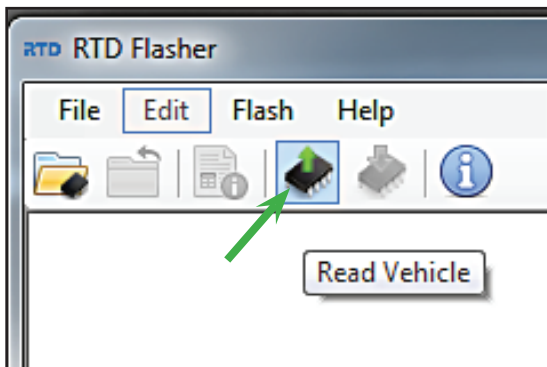
17. On Chrysler / Jeep applications with push start button, **DO NOT depress the brake (or clutch on manuals) pedal. You must push the button twice in order to completely power up all the vehicle systems. The gauges will sweep and the lights will come on in the dash.**



18. Open the RTD Flasher software.

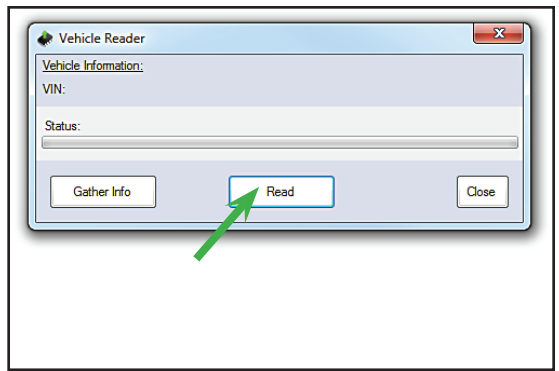


19. On the RTD Flasher Screen select the icon shown with the arrow to start reading the vehicle.

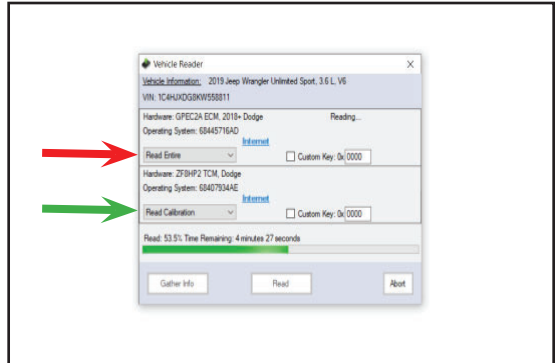




20. Select the read button to begin the process.



21. Choose “Read Entire” from the drop down menu for the ECM (red arrow location). Follow directions below for the TCM (green arrow location). \*Note: On newer vehicles that do not allow you to upload the transmission because the module is not supported or needs an additional unlocking process, please also deselect the TCM.

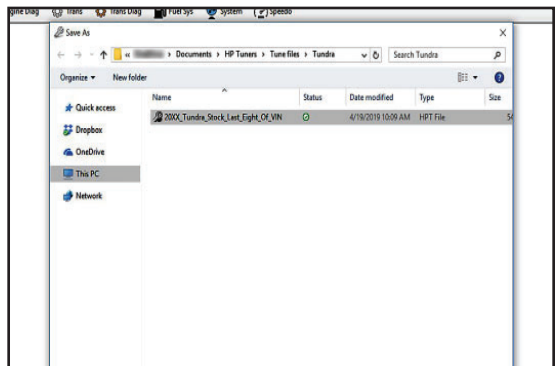


- **JL/JT TCM: Read Calibration**
- **JK TCM: Read Calibration**

22. Save the file with the following format:  
20XX\_Model\_Stock\_  
Last\_Eight\_Of\_VIN

The “XX” area will have the model year and the “VIN” area will have your vehicle identification number.

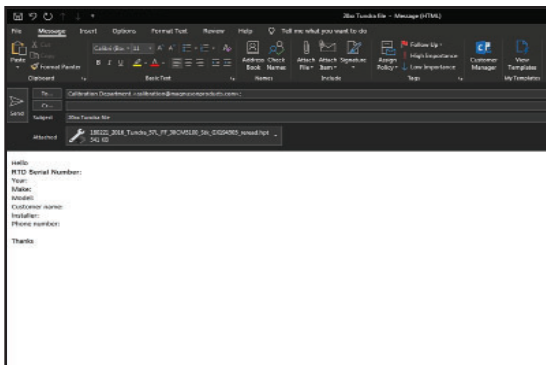
**(Example: 2020\_JL\_Stock\_LL123456)**



23. Once the upload is complete you can disconnect from the vehicle and email the file to:

**calibration@magnuson  
superchargers.com.**

Please include the information shown in the next step with the email containing the file.



24. Information to include in email:

a. **Serial # of RTD  
Flashing tool**

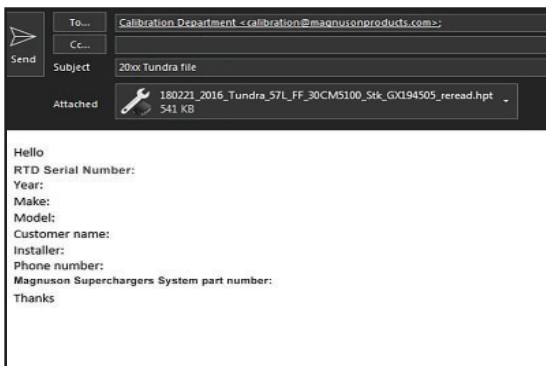
b. Customer Name/  
Install Shop

c. Contact information  
including phone number

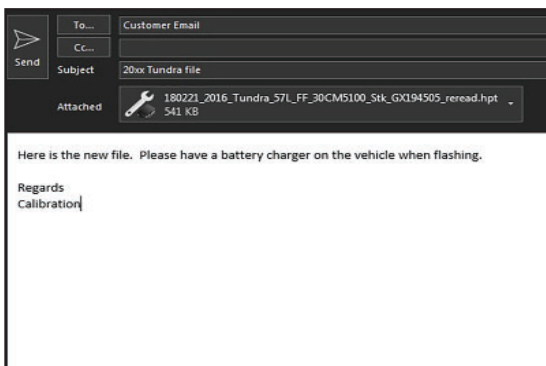
d. Year/Make/Model of  
the Vehicle.

e. Magnuson  
Superchargers System  
part number.

**All information must  
be provided for prompt  
service.**



25. Once the new file is completed it will be emailed back to you. Please allow at least 24 hours Monday-Friday for the new file to be created



**\*JEEP JK 2012-2014 DO NOT REMOVE YOUR PCM\***

26. Follow the instructions in the vehicle installation manual to remove the PCM from the vehicle.

**Follow the instructions on the front page of this manual and send the front page filled out inside the provided box along with the PCM.**



**Ensure that you have written the MOD# on the outside of the box.**

You will have to pay to ship your PCM to the following address:

**ATT: Dodge Mod Service**

**HP Tuners, LLC**

**700 Eastwood Ln**

**Buffalo Grove, IL 60089, United States**

(HP Tuners will pay for the return shipping)

27. After you have received your PCM back from HP Tuners you will need to reinstall it according to the vehicle installation instructions.



28. **Once again connect a battery charger to the vehicle's battery to ensure that you have at least 12V at all times while following these instructions. Ensure that you ground it correctly for Jeeps as shown earlier.**



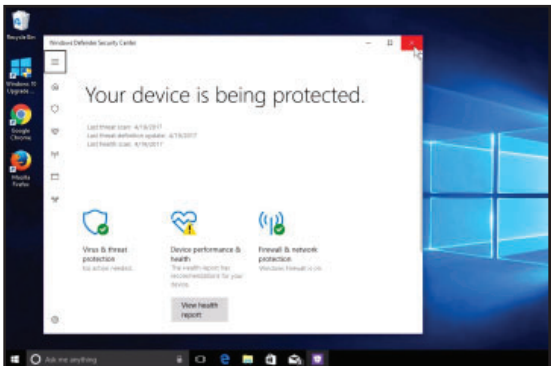
29. Reconnect to the vehicle OBD port (again needing internet access) and open the RTD Flasher program. **Use the bypass cable as you have done in previous steps for 2018+ vehicles.**



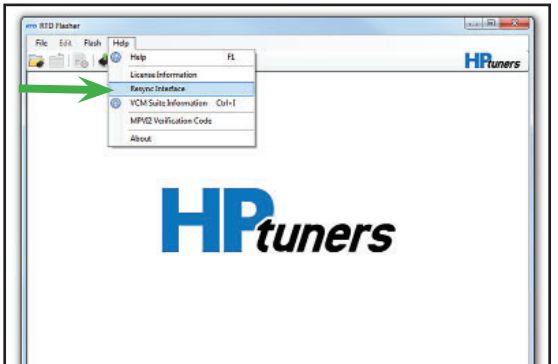
30. On Chrysler / Jeep applications with push start button, **DO NOT** depress the brake (or clutch on manuals) pedal. You must push the button twice in order to completely power up all the vehicle systems. The gauges will sweep and the lights will come on in the dash.



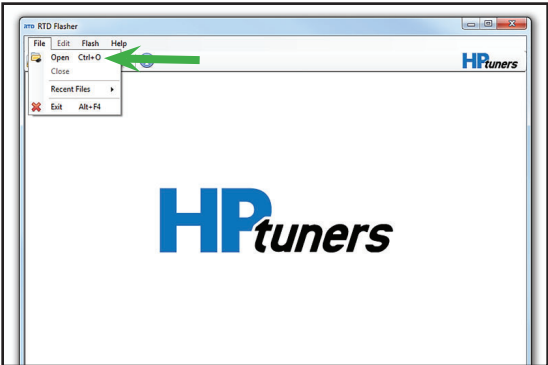
31. If you have a newer version of Microsoft Windows, you must "Disable" Windows defender or any other firewall in order to be able to write to the vehicle using HP Tuners.



32. Now select "Help" and then Resync Interface once again. **You must Resync your RTD flash tool before you can write the new file to your vehicle.**



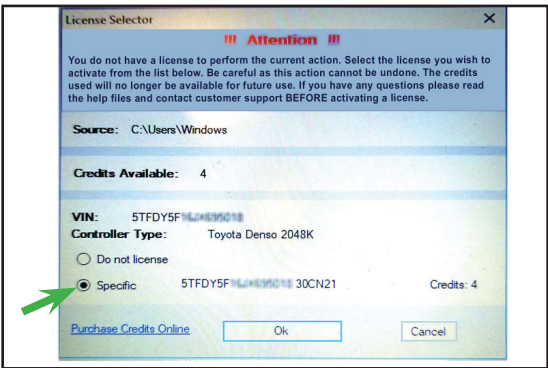
33. Open the new tune file that was emailed to you in the RTD Flasher software.



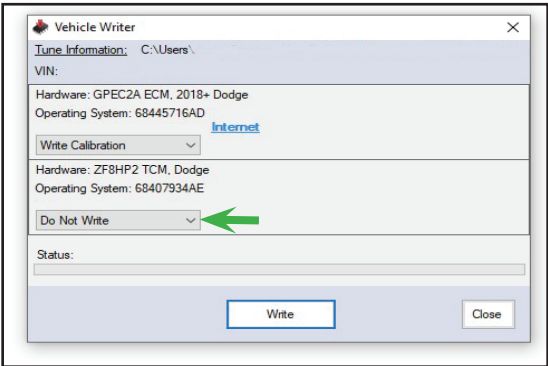
34. Select the “Write Vehicle” icon to download the program to the PCM. **DO NOT disconnect, try to stop or panic during the download. If there is a problem the program will abort the download.** (This process takes about 10 Minutes)



35. Select the “Specific” license that matches your vehicle. Then select “OK”.

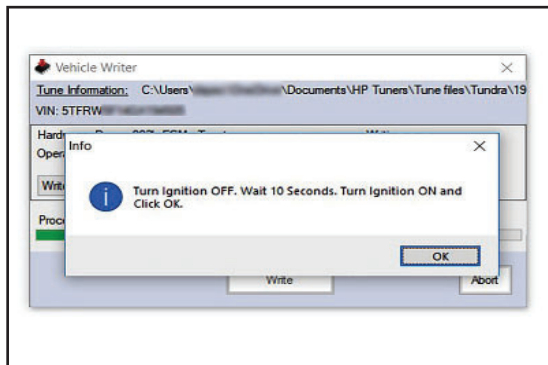


36. Select “write calibration” if the transmission file is included in your returned calibration file.

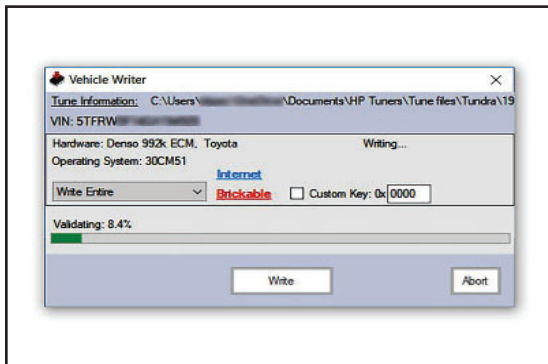




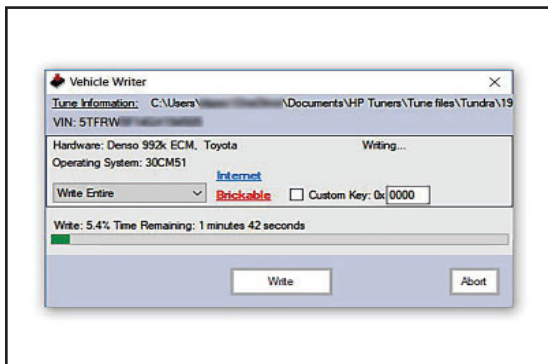
37. **Some vehicles will not show this "Info" window. Skip this step if you do not see this information on the screen.** You will be prompted to "Turn the ignition OFF. Wait 10 Seconds. Turn the Ignition ON and click OK."



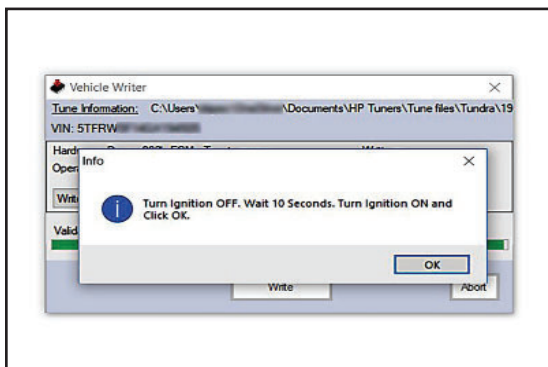
38. Validation will start after the write procedure.  
\*Note: Not all applications will show the validation process. You may only see a "Write Complete" message.



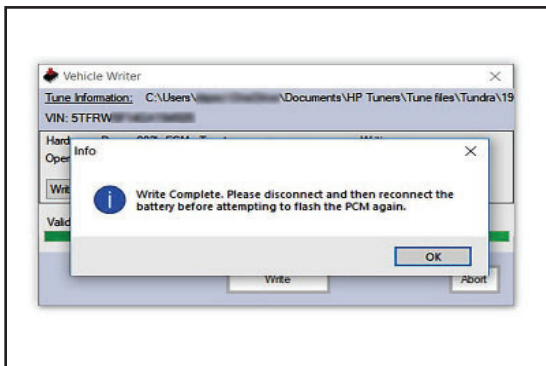
39. The writing process will begin.



40. **Some vehicles will not show this "Info" window. Skip this step if you do not see this information on the screen.** Once again you will be prompted to "Turn the ignition OFF. Wait 10 Seconds. Turn the Ignition ON and click OK."



41. **Some vehicles will not show this “Info” window. Skip this step if you do not see this information on the screen.** At the end of the download process you will see a “Write Complete” Info window. Select “OK” and exit the RTD Flasher.



42. After closing the RTD Flasher, cycle the key OFF. **Your vehicle is now ready for the installation of the Supercharger System.**



If you have any troubles with this process contact our technical support at [support@magnusonsuperchargers.com](mailto:support@magnusonsuperchargers.com) or call 1-805-642-8833 (Press Option 3)



# **MAGNUSON**

*SUPERCHARGERS*

1990 Knoll Drive, Building A  
Ventura, CA, 93003  
[www.magnusonsuperchargers.com](http://www.magnusonsuperchargers.com)  
1.805.642.8833