

MAXIMUS-3

★ ★ ★

10A/X & HARD ROCK RUBICON

PERIPHERAL LIGHT BRACKETS

INSTALLATION GUIDES

PLEASE MAKE SURE YOU READ AND UNDERSTAND THE ENTIRE INSTALLATION GUIDE BEFORE YOU START. WE EXPECT YOU TO HAVE BASIC MECHANICAL ABILITIES TO PERFORM THIS INSTALLATION.

WE RECOMMEND THAT YOU SEPARATE AND IDENTIFY ALL THE PARTS AND HARDWARE KITS YOU RECEIVED WITH YOUR SHIPMENT BEFORE YOU PROCEED TO DISASSEMBLE YOUR BUMPER.

Parts List:

Qty

Tools Required:

Peripheral Light Brackets LHS
Peripheral Light Brackets RHS

1
1

- Torx Bit # 30

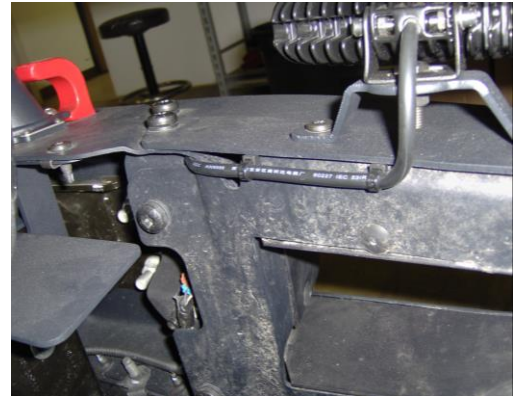
INSTALLATION STEPS

(1)- INSTALL AS SHOWN IN THE PICTURES BELOW:

Using a #30 Torx bit or Allen Key remove the top bumper end cab bolts, align the light bracket and loosely fasten. Note the LHS and RHS brackets.

You may use cable ties to secure your LED wire to the end cab as shown. Insert the cable ties between the end cab sheet metal and tighten the bolts to secure.

Bolt you lights to the Brackets and wire as desired or follow the lights instructions.



Your installation is complete. If you have questions regarding this installation please contact us at info@maximus-3.com or call 248 821 6654.