



BRIGHT IS ONLY THE BEGINNING

INSTALL GUIDE

JEEP JL XB TAIL LIGHTS

LF746/LF747



WARNING: IT IS THE INSTALLERS RESPONSIBILITY TO CONFIRM COMPLIANCE WITH STATE AND LOCAL LAWS. BY READING THIS DOCUMENT, YOU AGREE IT IS ONLY TO BE USED AS AN EDUCATIONAL GUIDE. MORIMOTO LIGHTING NOR ITS DEALERS MAKE GUARANTEES ON ANY FINISHED RESULTS, NOR ARE THEY TO BE HELD RESPONSIBLE FOR ANY DAMAGE, MISUSE, OR PERSONAL INJURIES. IF YOU ARE UNABLE TO CLEARLY UNDERSTAND AND ADAPT THE INFORMATION BELOW, PROFESSIONAL INSTALLATION IS RECOMMENDED.

IMPORTANT: IF YOUR VEHICLE IS EQUIPPED WITH ANYTHING BUT MORIMOTO OR OEM TAILLIGHTS, SIDE MARKERS OR OTHER OEM EXTERIOR LIGHTING; YOU MAY EXPERIENCE A HYPER FLASH AND/OR PROBLEMS WITH THE SEQUENTIAL SIGNAL SETTING ON THESE HEADLIGHTS. THIS IS NOT A DEFECT IN THE HEADLIGHT AND CAUSED BY UN-MATCHED IMPEDANCE WITH YOUR ORIGINAL VEHICLE SETTINGS.



JEEP JL XB TAIL LIGHTS

TABLE OF CONTENTS	PAGE
DISASSEMBLY -----	3
RADAR SWAP (OEM LED ONLY) -----	5
BOOST BAR INSTALLATION (OPTIONAL) -----	12
TAIL LIGHT INSTALLATION -----	13

WHAT'S INCLUDED



2X (ONE PAIR) TAIL
LIGHT ASSEMBLIES



2X MAGNET-MOUNT
RESISTORS



OPTIONAL: 1X BOOST
BAR REVERSE LIGHT



REQUIRED TOOLS

- PLASTIC PRY TOOL
- #2 PHILLIP'S HEAD SCREWDRIVER
- RATCHET AND 10MM SOCKET OR T40 TORX BIT



DISASSEMBLY

1. BEGINNING INSIDE THE REAR OF THE VEHICLE, LOCATE THE PLASTIC COVER ON THE INTERIOR TRIM PANEL, AND REMOVE IT USING A PLASTIC PRY TOOL



2. USING EITHER A 10MM SOCKET OR T40 TORX BIT, REMOVE THE PLASTIC SCREW LOCATED UNDER THE COVER PANEL. SINCE THE SCREW IS PLASTIC, MAKE SURE TO AVOID USING POWER TOOLS



DISASSEMBLY

3. PULL THE TAIL LIGHT STRAIGHT BACK, OFF OF THE VEHICLE



4. PULL BACK THE RED TAB ON THE TAIL LIGHT PLUG TO UNLOCK THE CONNECTOR, THEN PRESS DOWN ON THE BLACK TAB AND PULL TO UNPLUG THE LIGHT



5. REPEAT STEPS 1-4 ON THE OPPOSITE SIDE



RADAR SWAP (OEM LED ONLY)



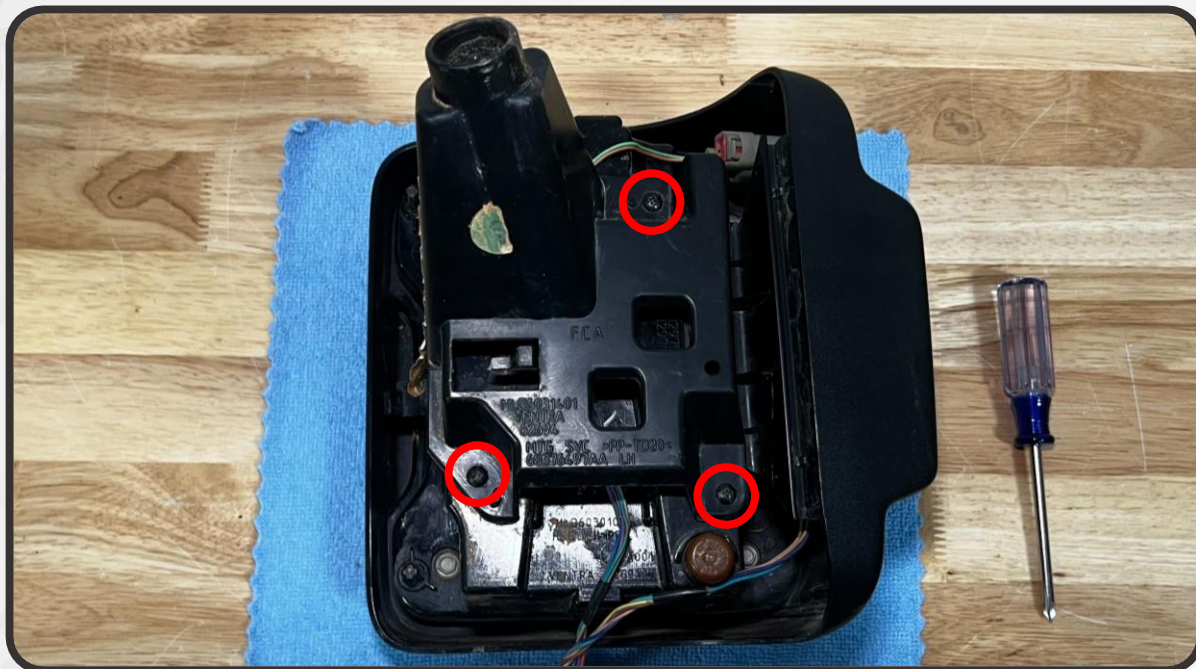
- FOR VEHICLES WITH FACTORY HALOGEN TAIL LIGHTS WITHOUT INTEGRATED BLIND SPOT RADARS, SKIP AHEAD TO PAGE 12

- FOR VEHICLES WITH FACTORY LED TAIL LIGHTS WITH INTEGRATED BLIND SPOT RADARS, PROCEED TO THE NEXT PAGE TO SWAP YOUR FACTORY RADAR OVER TO THE XB TAIL LIGHT



RADAR SWAP (OEM LED ONLY)

6. SET THE FACTORY TAIL LIGHT FACE DOWN ON A WORK BENCH. IT IS RECOMMENDED TO PLACE IT ON A MICROFIBER TOWEL OR SOFT WORK MAT TO PREVENT SCRATCHING THE LENS. USING A #2 PHILLIP'S HEAD SCREWDRIVER, REMOVE THE THREE SCREWS THAT SECURE THE TAIL LIGHT MOUNTING BRACKET TO THE HOUSING. THERE WILL BE ONE CLIP STILL HOLDING THE BRACKET. PULL THE BRACKET OFF OF THE HOUSING, RELEASING THE CLIP AS YOU DO, AND SET THE BRACKET ASIDE

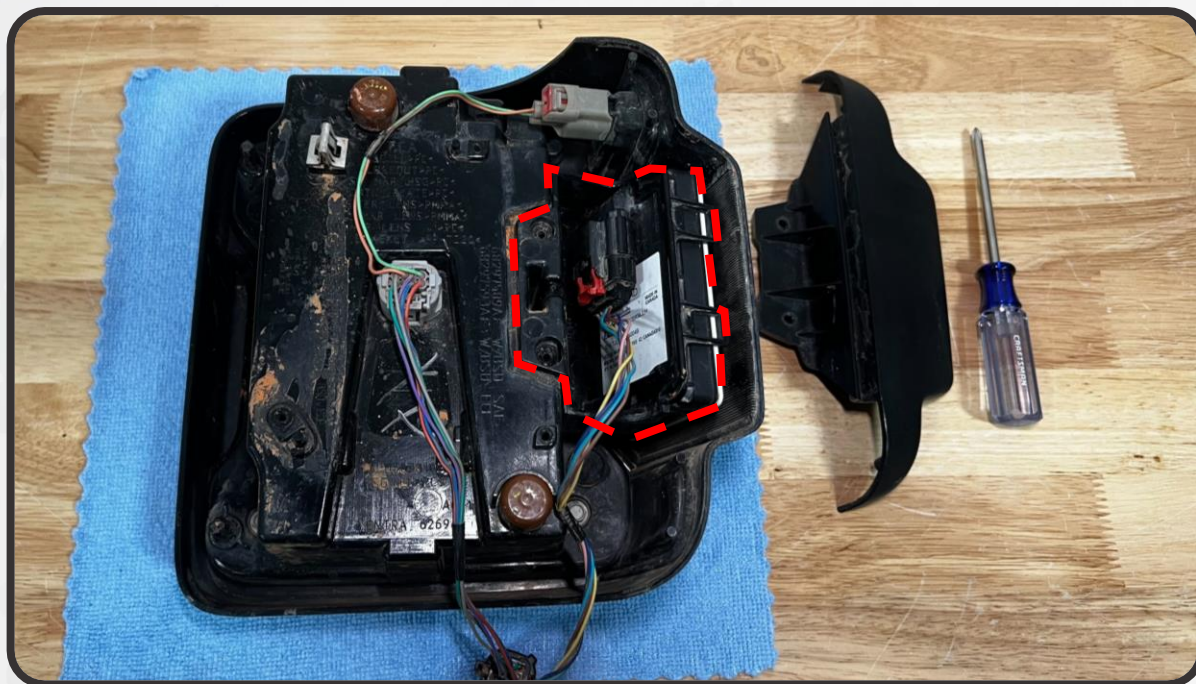


7. REMOVE THE TWO PHILLIP'S HEAD SCREWS THAT SECURE THE CORNER OF THE RADAR COVER, AND SET THE COVER ASIDE

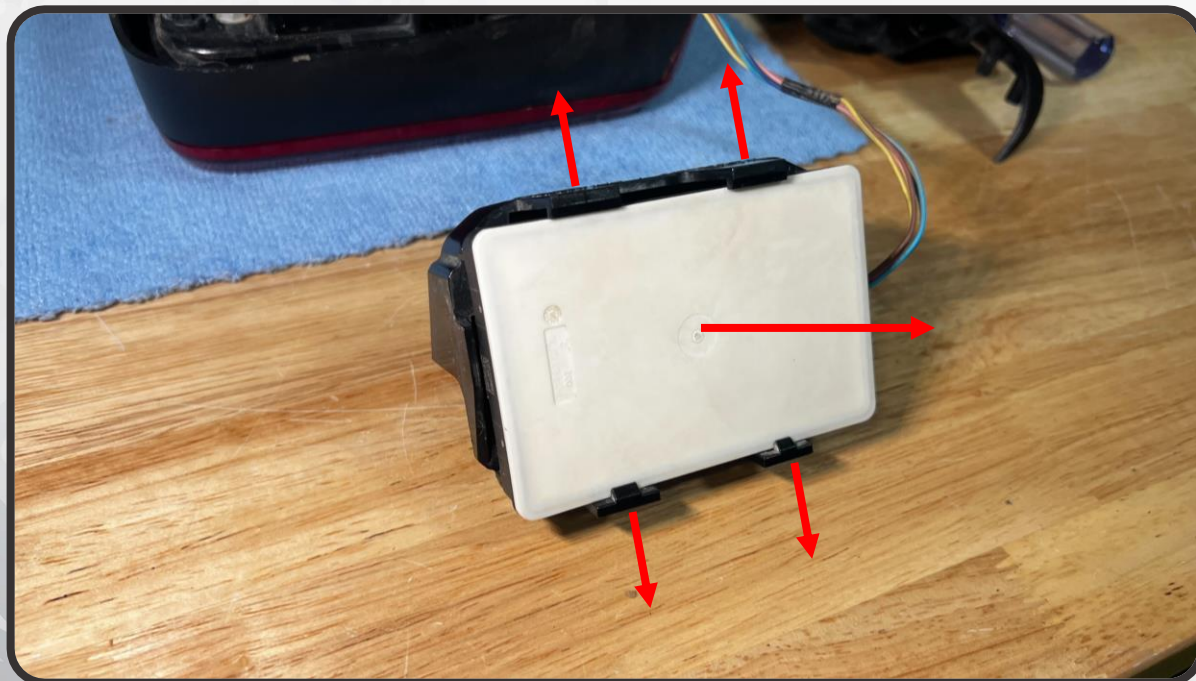


RADAR SWAP (OEM LED ONLY)

8. LIFT THE RADAR AND RADAR BRACKET OUT OF THE TAIL LIGHT AND SET IT ASIDE

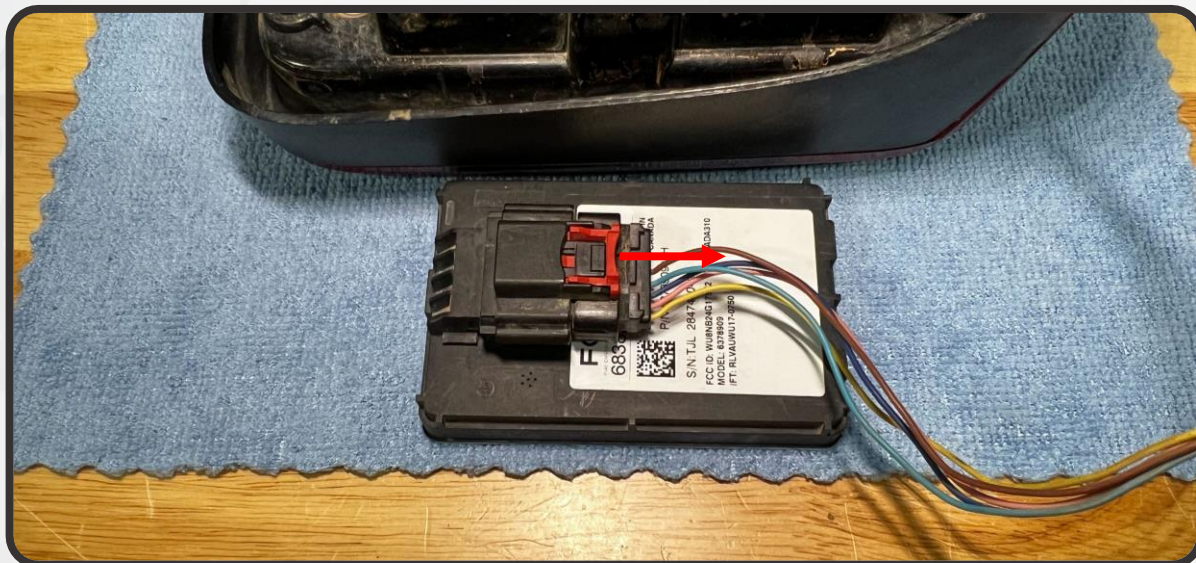


9. PRY OUTWARDS ON THE FOUR PLASTIC TABS SECURING THE RADAR TO THE BRACKET AND REMOVE THE RADAR



RADAR SWAP (OEM LED ONLY)

10. WITH THE RADAR REMOVED, PULL BACK ON THE RED CLIP TO UNLOCK THE CONNECTOR, THEN PRESS DOWN ON THE BLACK TAB AND PULL TO UNPLUG THE LIGHT. SET THE FACTORY LIGHT AND RADAR TO THE SIDE



11. TAKE THE NEW TAIL LIGHT AND PLACE IT FACE DOWN ON YOUR WORK BENCH. , REMOVE THE THREE SCREWS THAT SECURE THE TAIL LIGHT MOUNTING BRACKET TO THE HOUSING. THERE WILL BE ONE CLIP STILL HOLDING THE BRACKET (THE SAME AS THE FACTORY LIGHT). PULL THE BRACKET OFF OF THE HOUSING, RELEASING THE CLIP AS YOU DO, AND SET THE BRACKET ASIDE

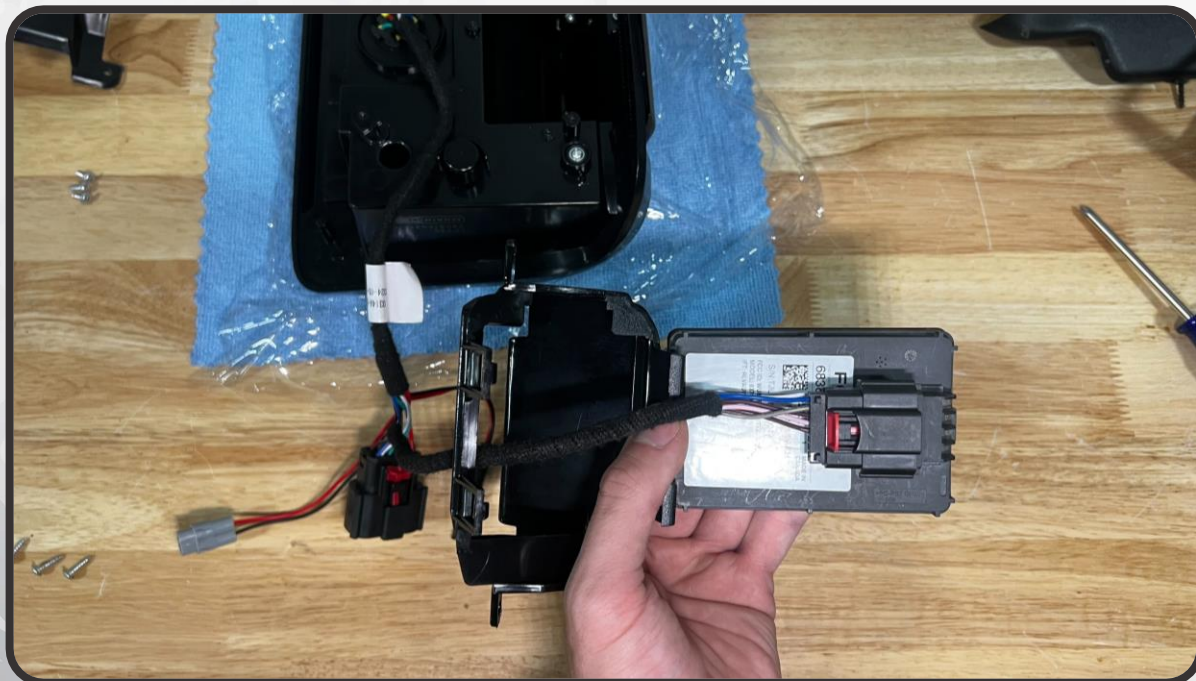


RADAR SWAP (OEM LED ONLY)

12. REMOVE THE THREE PHILLIP'S HEAD SCREWS SECURING THE RADAR BRACKET TO THE TAIL LIGHT HOUSING AND REMOVE THE BRACKET



13. PASS THE RADAR WIRING THROUGH THE RADAR BRACKET, AS SHOWN BELOW, AND PLUG THE HARNESS INTO THE RADAR. PRESS THE RED LOCK-TAB INTO THE "LOCKED" POSITION



RADAR SWAP (OEM LED ONLY)

14. CLIP THE RADAR INTO THE RADAR BRACKET. MAKE SURE ALL FOUR OF THE PLASTIC CLIPS ARE LOCKED IN AROUND THE RADAR

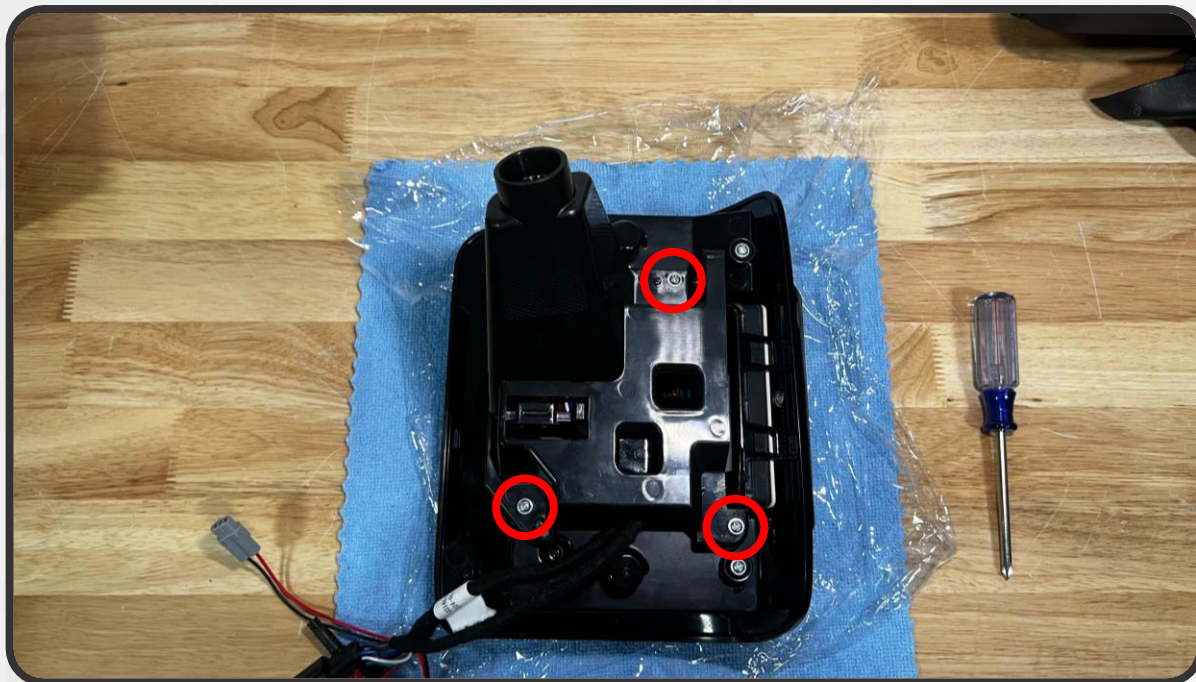


15. PLACE THE RADAR AND RADAR BRACKET BACK INTO THE TAIL LIGHT ASSEMBLY AND REINSTALL THE THREE PHILLIP'S HEAD SCREWS



RADAR SWAP (OEM LED ONLY)

16. CLIP THE TAIL LIGHT MOUNTING BRACKET BACK ONTO THE TAIL LIGHT ASSEMBLY, AND REINSTALL THE THREE PHILLIP'S HEAD SCREWS THAT SECURE IT



17. REPEAT STEPS 6-16 FOR THE OPPOSITE TAIL LIGHT



BOOST BAR INSTALLATION (OPTIONAL)

IF YOU WILL BE INSTALLING THE MORIMOTO BACKUP LIGHT BOOST BAR (SOLD SEPARATELY), FOLLOW THE INSTRUCTIONS BELOW. IF NOT, SKIP AHEAD TO PAGE 15

NOTE: SOME MINOR MODIFICATION IS REQUIRED TO FIT THE STOCK BUMPER

18. REMOVE THE TWO SCREWS SECURING THE LICENSE PLATE



19. FOR THE STOCK BUMPER, THE ORIGINAL MOUNTING HOLES MAY BE TOO HIGH TO FIT THE BOOST BAR. THE LICENSE PLATE CAN BE RELOCATED TO FIT THE BOOST BAR BY REMOVING THE TRIM PANEL THAT HOLDS THE LICENSE PLATE AND DRILLING A 3/16" HOLE 3/8" BELOW EACH OF THE FACTORY MOUNTING HOLES. ALWAYS CHECK BEHIND YOUR BUMPER BEFORE DRILLING



BOOST BAR INSTALLATION (OPTIONAL)

1. TEST FIT YOUR BOOST BAR AND MARK WHERE YOUR WIRE NEEDS TO PASS THROUGH. DRILL A 5/16" HOLE TO PASS THE WIRE THROUGH

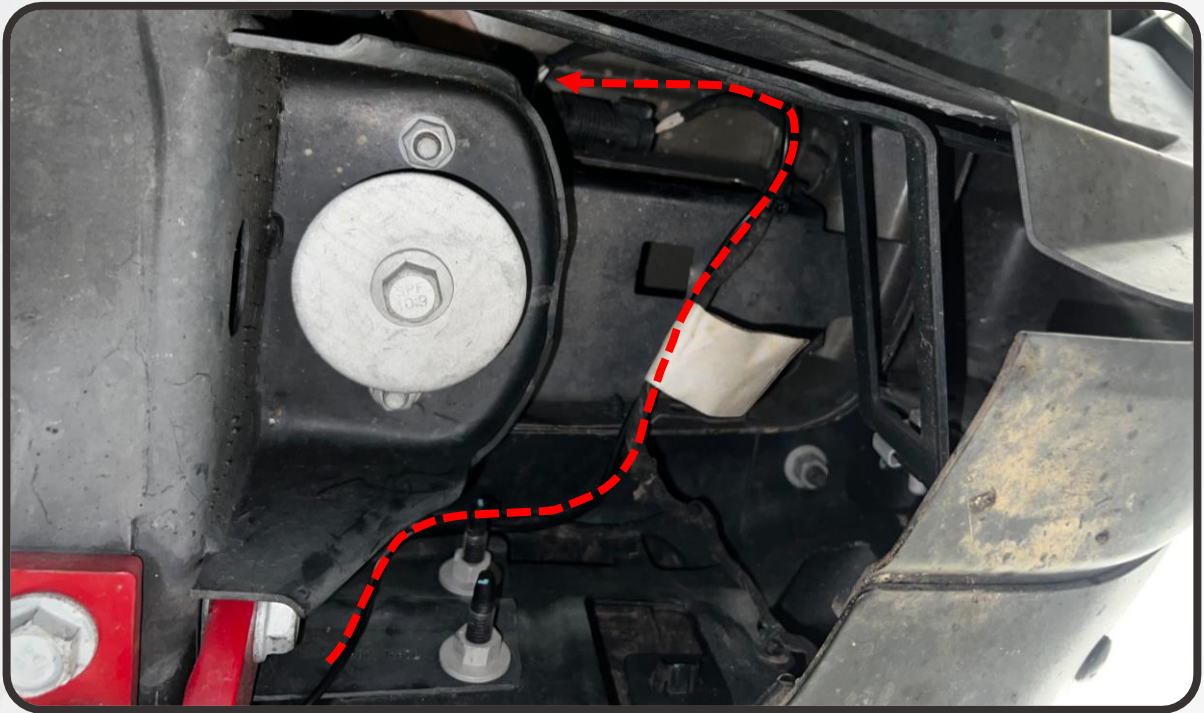


19. PASS THE BOOST BAR WIRE THROUGH THE HOLE YOU DRILLED AND MOUNT THE LICENSE PLATE A BOOST BAR



BOOST BAR INSTALLATION (OPTIONAL)

18. BEHIND THE BUMPER, TAKE YOUR BOOST BAR WIRING AND FOLLOW ALONG THE TAIL LIGHT HARNESS UP TO THE TAIL LIGHT CAVITY. SECURE THE BOOST BAR WIRING TO THE TAIL LIGHT HARNESS USING ZIP TIES



19. ROUTE THE WIRE UP INTO THE TAIL LIGHT CAVITY AND SECURE AND LOOSE/EXCESS WIRING



TAIL LIGHT INSTALLATION

20. IF YOUR JEEP CAME WITH FACTORY HALOGEN TAIL LIGHTS, ATTACH ONE OF THE MAGNET MOUNTED RESISTORS TO A METAL SURFACE WITHIN THE TAIL LIGHT CAVITY



21. CONNECT THE FACTORY TAIL LIGHT HARNESS TO THE NEW TAIL LIGHT ASSEMBLY AND MOVE THE RED TAB FORWARD TO THE "LOCKED" POSITION. IF YOU HAD FACTORY HALOGEN TAIL LIGHTS, CONNECT THE RESISTOR TO THE NEW TAIL LIGHT AS WELL. IF YOU ARE INSTALLING THE OPTIONAL BOOST BAR, CONNECT IT TO THE TAIL LIGHT AS WELL



TAIL LIGHT INSTALLATION

22. INSERT THE TAIL LIGHT ASSEMBLY INTO THE TAIL LIGHT CAVITY. REINSTALL THE PLASTIC TAIL LIGHT MOUNTING SCREW TO SECURE THE LIGHT AND TIGHTEN UNTIL SNUG USING HAND TOOLS. REINSTALL THE COVER PANEL OVER THE TOP OF THE SCREW



23. REPEAT STEPS 20-22 ON THE OPPOSITE SIDE.
24. GET IN THE VEHICLE AND TEST ALL FUNCTIONS TO ENSURE THE TAIL LIGHTS ARE FUNCTIONING PROPERLY



JEEP JL XB TAIL LIGHTS



- ENJOY YOUR NEW MORIMOTO XB TAIL LIGHTS! -

