

MAXIMUS-3



MAXIMUS-3 JL 2-DOOR ROOF RACK SYSTEM With Rhino Rack Pioneer Platform

INSTALLATION GUIDE

THE MAXIMUS-3 JL 2-DOOR ROOF RACK ONLY FITS (2018-Current) TWO DOOR JL WRANGLERS with HARDTOP or NO TOP.

Please read and understand the entire installation guide before you start this installation. We expect you to have basic mechanical abilities to perform this installation. A second person is recommended for lifting the platform on/off the vehicle.

We recommend that you **separate and identify all the parts and hardware kits you received with your shipment before you proceed to disassemble your Jeep.**

Parts List

Qty

Maximus-3 Platform Legs with no Logo	1
Maximus-3 Platform Legs with Logo	3
Maximus-3 Front Inner Bracket Assy RHS	1
Maximus-3 Front Inner Bracket Assy LHS	1
Maximus-3 Rear Inner Bracket Assy RHS	1
Maximus-3 Rear Inner Bracket Assy LHS	1
Rhino Rack Pioneer Platform Kit	1
Maximus-3 Satellite Antenna Bracket	1
Option: Maximus-3 Side Ladder	1-2
Option: Rhino Rack Pioneer Rail Kit	1



Maximus-3 Hardware List

Qty

LEGS to CROSS BARS:

M10 Hex Bolts – Zinc	4
M10 Channel Nuts – Zinc	4
10 MM Flat Washers – Zinc	4

LEGS to HARDTOP:

M8 x 30 Sealing Bolts – Black Stainless	8
M8 Nylock Nuts – Stainless Steel	8
8mm Washers – Stainless Steel	8
Rubber Gaskets/Washers	8

INTERNAL BRACKETS TO SPORTS BAR:

Front Brackets

M8 x 25 Flanged Hex Bolts - Yellow Zinc	6
M8 x 20 Flanged Hex Bolts – Zinc	4

Rear Brackets

M8 x 25 Flanged Hex Bolts - Yellow Zinc	8
M8 Nylock Flanged Nuts - Zinc	4

Option: Ladder Hardware Kit (per ladder) Qty

Top Kit:

M8 Truss Head Bolts – Black Stainless	2
M8 Channel Nuts - Zinc	2
8 mm Washers – Stainless Steel	2

Bottom Kit:

M8 Truss Head Bolts – Black Stainless	2
M8 Nyloc Nuts – Stainless Steel	2
8 mm Washers – Stainless Steel	4

Interior Kit:

M8 Truss Head Bolts – Stainless Steel	2
M8 Serrated Flange Nuts – Zinc	2
8 mm Flat Washers – Zinc	2

Tools Required

Metric Drive Sockets and Extensions
Metric wrenches/spanners
Metric Measuring Tape
Driller and Drill Bits
Metric Allen Key # 5
Masking or Painter's Tape

INSTALLATION STEPS

A- ASSEMBLE THE PIONEER PLATFORM

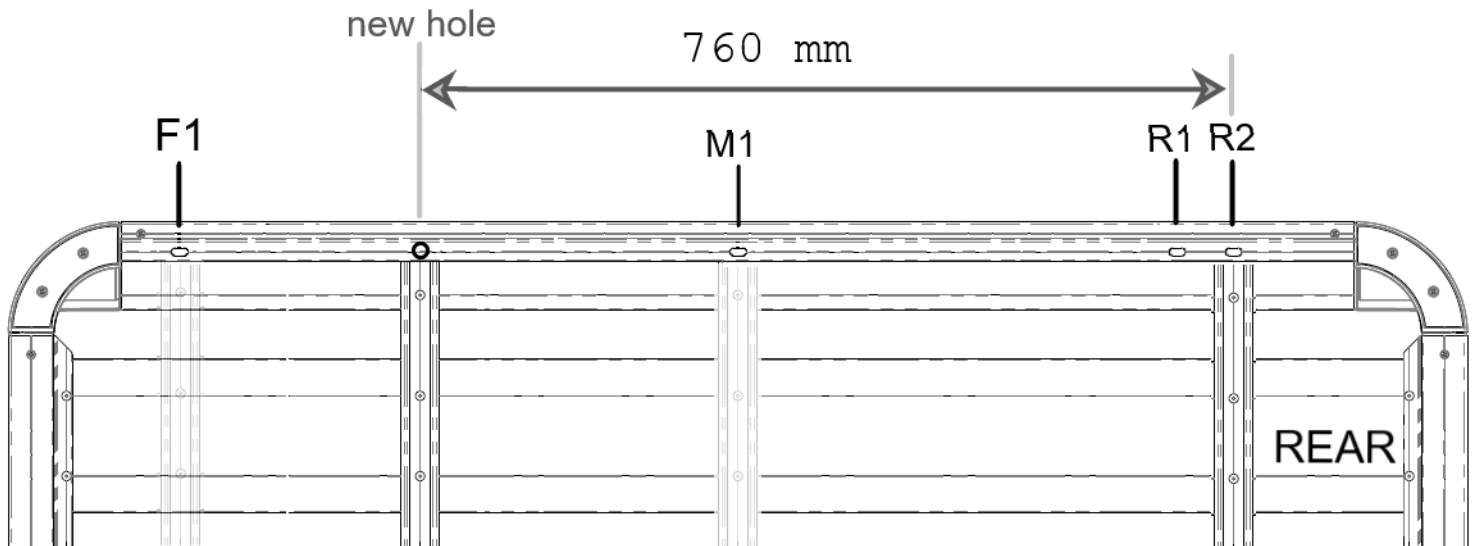
1. Assemble the Pioneer Platform using Hardware and Instructions provided with the Rhino Rack platform kit. (steps 1-5)
2. Lay the assembled Pioneer Platform upside down on a protective surface to avoid surface damage.
3. Mark a new mounting location F2, measured on the groove 760 mm from middle of mounting location R2 as shown below. Drill a new hole using 8 mm or 21/64" drill bit. Do this on both sides of the platform.
4. Attach the Pioneer Platform's crossbars according to IMPORTANT mounting locations/slots as shown below.

Crossbar #1 goes in mounting location R2

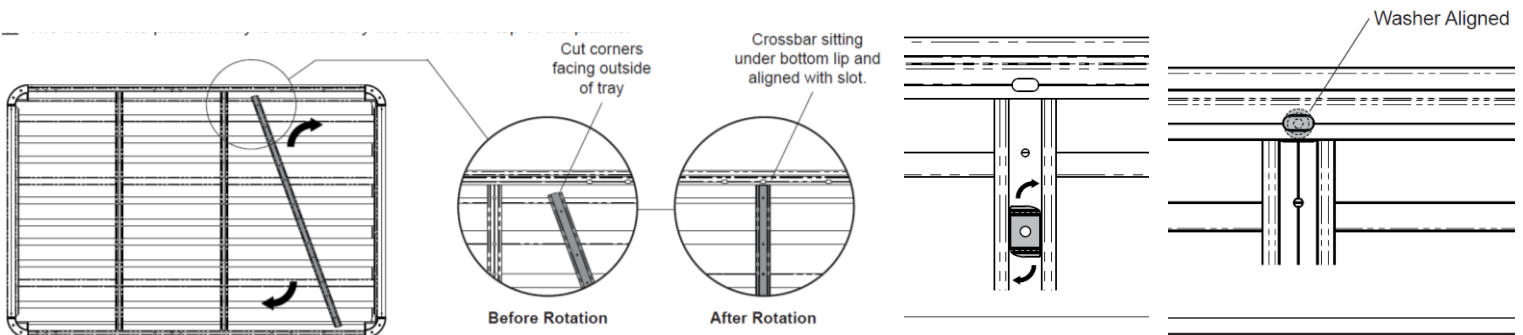
Crossbar #2 goes in the new holes you drilled in step A3

Crossbar #3 goes in mounting location M1 or any custom location (F1 or new holes drilled)

Note: Maximus-3 Roof Rack Legs will attach to crossbars #1 & #2



5. Insert the crossbars into the platform side bars and rotate into position as shown below – note correct mounting locations as shown in step A4 above.
6. Place a channel nut in the crossbar as shown below and rotate 90 degrees. Arrange the bolts as shown below and align to the mounting locations and fasten by hand (refer to Rhino Rack's Instructions for placement of washers)
7. Center the crossbars over the mounting locations/slots and tighten the bolts with the Allen key provided.



B- INSTALL MAXIMUS-3 ROOF RACK LEGS TO THE PLATFORM

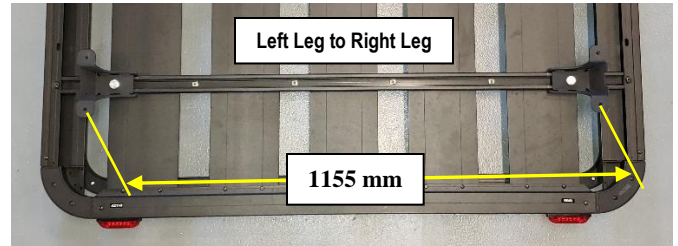
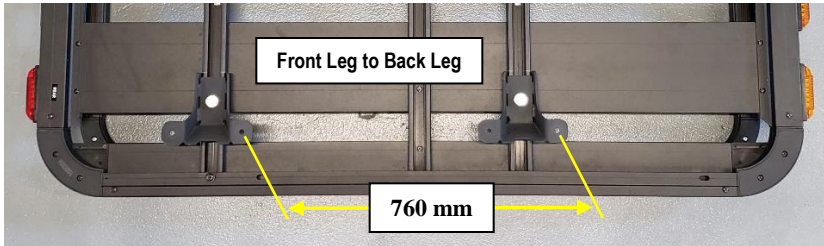
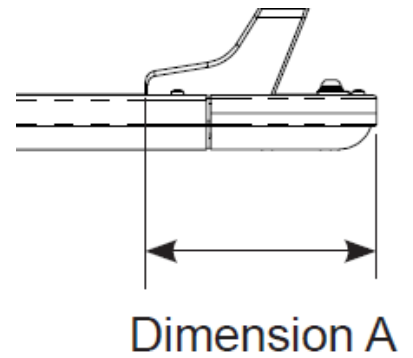
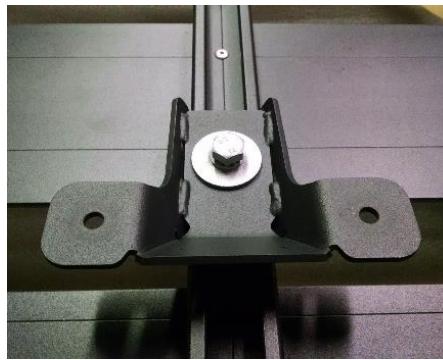
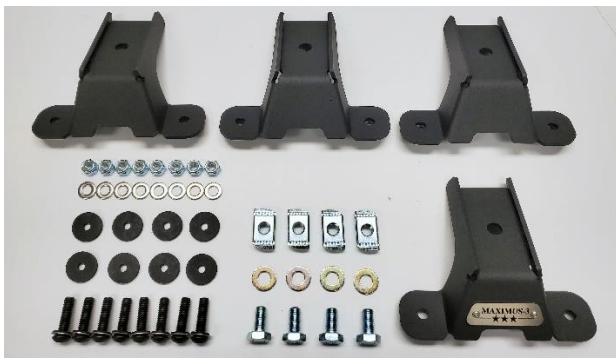
1. By hand, loosely secure the Maximus-3 Roof Rack Legs to the crossbars with the provided M10 Bolts, Channel Nuts, and Washers. Leave loose enough to move.
 - Two Legs on Crossbar #1 (R1)
 - Two Legs on Crossbar #2 (F2), the new holes drilled in step A3
2. Using 16 mm socket/wrench, set **Dimension A** to roughly 215 mm (8.5 Inch) on all four Legs - do not tighten for now.
3. Measure and Adjust the Legs according to IMPORTANT final dimensions below.

➤ **Distance between Front Leg and Back Leg = 760 mm** measured from center to center of leg bolt holes

➤ **Distance between Left Leg and Right Leg = 1155 mm** measured from center to center of leg bolt holes

Note: While maintaining the 1155 mm dimension above the **Left Leg to Right Leg should be symmetrically centered on the platform.**

Double check your measurements and tighten down all 4 legs.



PREP THE JEEP

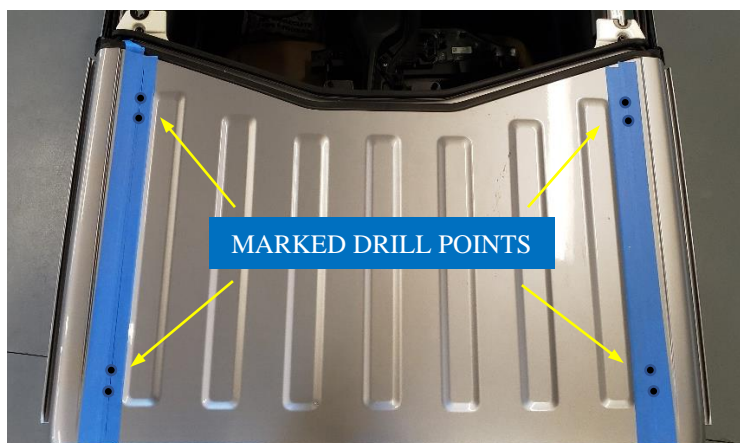
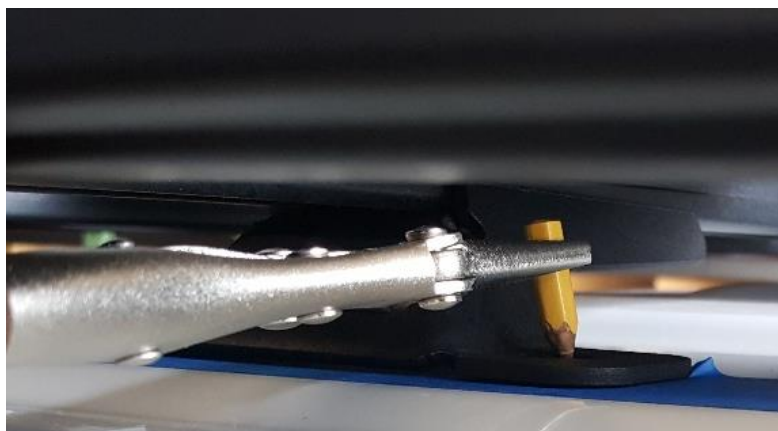
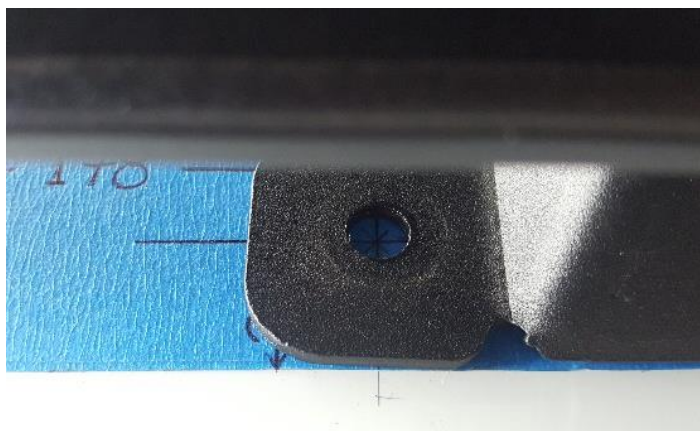
C- REMOVE THE SOUNDBAR AND TRIM PANELS

1. Remove all T-25 torx bolts from the Sports Bar Trim Pieces. Then carefully pull to release clips and remove trim panels.
2. Unclip all electrical harnesses from Soundbar and Antennas (4x harnesses in JL Rubicon)
3. Remove the six (6) Soundbar bolts, using a 10 mm socket wrench.



D- DRILL HOLES IN HARDTOP FOR MOUNTING PLATFORM ASSEMBLY

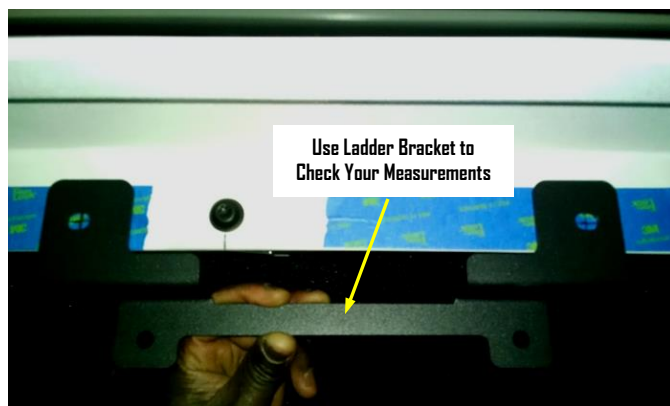
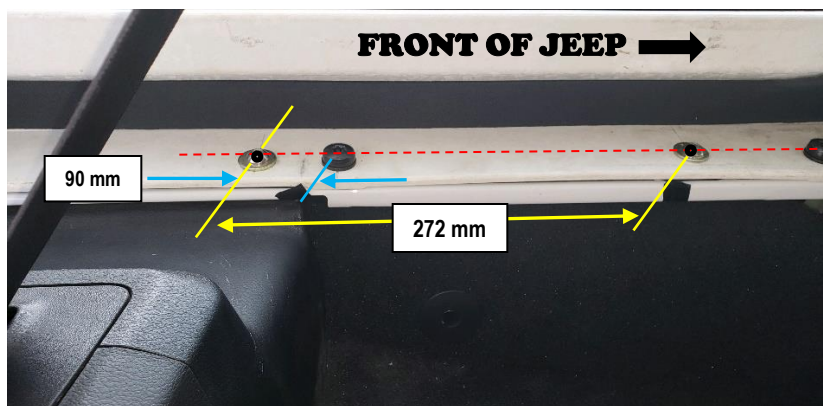
1. Carefully remove the Freedom Tops and place on a protective surface.
2. Apply masking tape to the four corners of the hardtop. This will help when marking drill points and also protect the hardtop during fitments.
3. **REAR MEASUREMENTS:** mark the rear-most drill location at **50 mm** from the hardtop joint line and **62mm** from outer raised edge as shown below. REPEAT on the other side.
4. **FRONT MEASUREMENTS:** measure and mark a line 70 mm from the outer raised edge of the hardtop – your line should be roughly parallel to the vehicle (passing through the rear mark)
5. With help from a second person, lift the Platform over the Jeep and carefully place on the Hardtop
6. Carefully align the rear-most hole of back Platform Legs with the back drill point you marked in step (D3) above. Make sure all 4 legs sit well on the hardtop with front legs holes lining up on the line you marked in step (D4).
Make sure before you mark your final drill points – adjust the legs if needed.
7. Using a pen/pencil, mark all drill points on the Hardtop through leg holes as shown below – 2 for each leg.
8. Carefully lift and remove the Platform from the hardtop.
9. With the Platform removed mark precise center points of the drill marks – there 8 drill points.
10. Drill pilot holes with a small drill bit and then drill 9 MM (3/8") final mounting holes – drill through headliners if you have
11. Remove masking tape from the mounting surface and clean the surface for final install.



IF YOU ARE NOT INSTALLING SIDE LADDER(S) PLEASE PROCEED TO NEXT STEP (F).

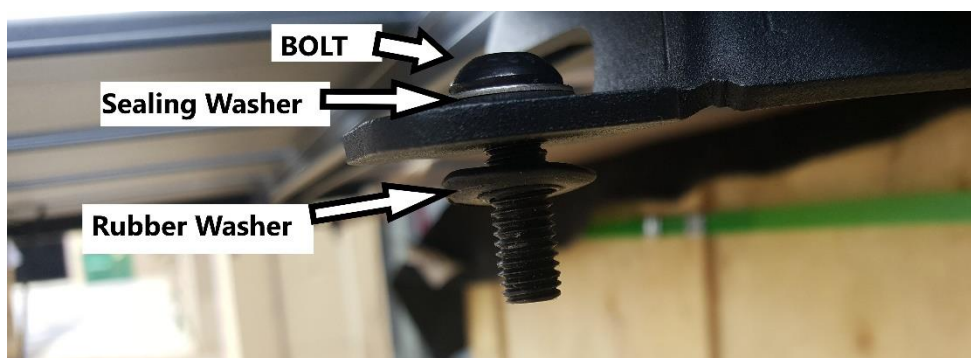
E- DRILL HOLES FOR MAXIMUS-3 SIDE LADDER BRACKET

1. Mark a drill point for rear mounting hole **90 mm** from the middle Hardtop bolt and **38 mm** from the Hardtop wall (in line with factory hardtop bolts).
2. Mark the front hole **272 mm** from the back hole you just marked. Use the Ladder Bracket to check/verify your marking.
3. Drill pilot holes through the Hardtop and body sheet metal using a small drill bit then drill final holes with a **9 mm (3/8")** drill bit. Please refer to pictures below.
WARNING: Avoid drilling into wires that run along the body tub under the plastic panels – do not drill deep.
4. Clean drilling debris and dust with a vacuum cleaner. Touch up the inside of drilled holes with paint for rust proofing.



F- MOUNT THE PLATFORM ASSEMBLY ONTO THE HARDTOP

1. Insert legs Sealing Bolts (pre-assembled bolt + sealing washer) through the legs and add Rubber Washers as shown below. Do it for all four (4) legs.
2. With help from a second person, lift the Platform assembly and carefully place on the Hardtop. Carefully align all 8 mounting bolts to pass through the holes you drilled in the hardtop in step D10.

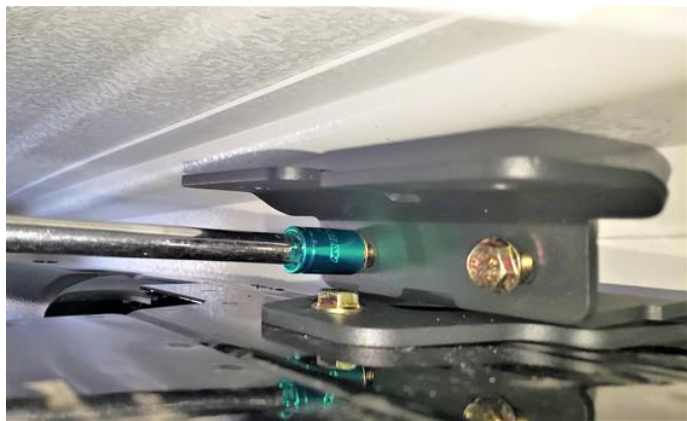
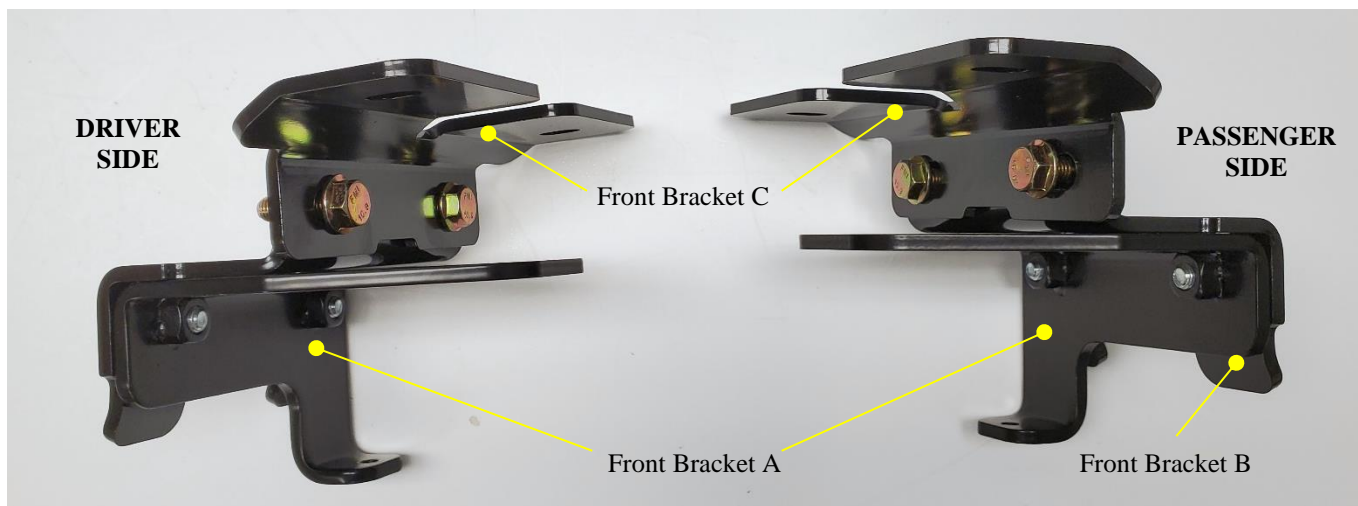


G- INSTALL MAXIMUS-3 FRONT INTERIOR BRACKET ASSEMBLIES

1. Identify the Left side and the Right side of internal brackets. Refer to picture below. Separate the parts A, B and C from each other - note how parts are assembled, also note location of bolts.
2. Unbolt the Hardtop – there are 2 bolts up at freedom tops joints in the front and 6 bolts inside in the back.
3. Lift front of the hardtop and prop up a few inches, we use such as: block of wood, plastic, or a roll of tape.
4. Slide bracket A in place over sport bar brace plate, align to threaded mounting hole on brace plate and bolt down using yellow M8 flanged bolt provided, as shown below. Repeat on the other side and tighten the bolts.
5. Place bracket B over bracket A, align mounting points on the side and bolt down using 2 zinc M8 flanged bolts provided as shown below - make sure the brackets seated flat against each other. Repeat on the other side and tighten the bolts.
6. Place bracket C to bracket B as shown below - make sure the bends point inwards of the Jeep and the lower top surface points to the front of the Jeep such that the bracket seats flat on fiber glass surfaces.
7. Insert 2 yellow M8 flanged bolts, thread the bolts on, but leave loose for now to allow adjustment.

IF YOU ARE INSTALLING SIDE LADDER(S) SKIP TO NEXT STEP (H), OTHERWISE CONTINUE (7).

8. Remove the block/prop and seat the hardtop back making sure that all 4 front leg bolts are lining up with holes in top front brackets C.
9. Re-install the Hardtop bolts – total 8 factory bolts.
10. Now tighten front top leg bolts using nylock nuts and washers provided – you will need a second person to hold the leg bolts from top with an Allen Key while you tighten the nuts from inside. Tighten all 4 bolts to **10 ft.lb**
11. Using 13 mm socket, extension and ratchet tighten all 4 yellow hex bolts holding brackets B and C. Inspect all front brackets fitment and make sure all bolts are tightened.



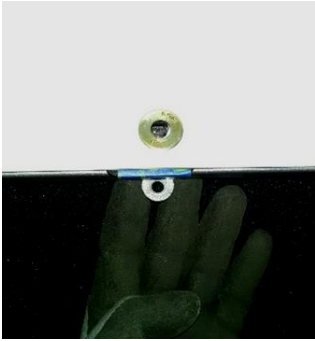
IF YOU ARE NOT INSTALLING SIDE LADDER(S) SKIP TO NEXT STEP (I)

H- INSTALL MAXIMUS-3 SIDE LADDER BRACKET (OPTION)

1. With the hardtop still propped up as directed in step G3, insert the Ladder's bottom support bracket between hardtop and the body tub. Align the bracket holes to your pre-drilled holes in step E3. You may use tape to temporarily hold the bracket in place on the body.
2. Remove the block/prop and seat the hardtop back. Make sure the ladder bracket is in place and holes line up. *Also make sure that all 4 front leg bolts are lining up with holes in top front brackets C.*
3. Bolt the ladder bracket down using M8 bolts, flat washers flanged nuts supplied. Tighten the bolts.
4. Re-install the Hardtop bolts – total 8 factory bolts.

FINISH INSTALLING FRONT BRACKETS

5. Now tighten top leg bolts using nylock nuts and washers provided – you will need a second person to hold the leg bolts from top with an Allen Key while you tighten the nuts from inside. Tighten all 4 bolts to **10 ft.lb**
6. Using 13 mm socket, extension and ratchet tighten all 4 yellow hex bolts holding brackets B and C.
Inspect all front brackets fitment and make sure all bolts are tightened.



I- INSTALL MAXIMUS-3 REAR INTERIOR BRACKET ASSEMBLIES

1. Identify the Left side and the Right side of internal brackets. Refer to picture below. Slightly loosen the 2 bolts holding bracket A and B together, but do not separate.
2. Slide the top part of the rear bracket B through the two leg bolts and hold up against the fiber glass. Note that bent part of the bracket points inwards of the Jeep. Refer to picture below.
3. Align the bottom of bracket A to factory threaded mounting holes in the side of the sports bar and bolt down using 2 yellow M8 flanged bolts supplied – adjust the bracket and tighten the two bolts using 13 mm socket.
4. Now tighten top leg bolts using nylock nuts and washers provided – you will need a second person to hold the leg bolts from top with an Allen Key while you tighten the nuts from inside. Tighten all 4 bolts to **10 ft.lb**
5. Using 13 mm socket/wrench tighten all 4 yellow hex bolts holding brackets A and B together.
Inspect all front brackets fitment and make sure all bolts are tightened.

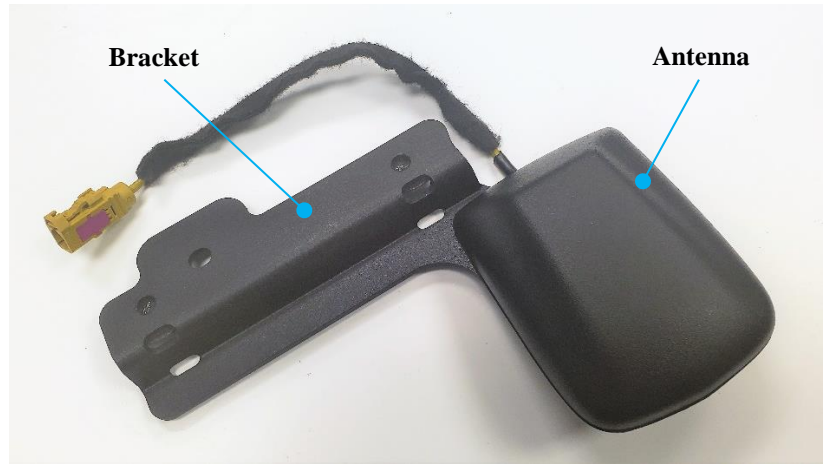


J- RELOCATE SATELLITE ANTENNA

Satellite Antenna is located above the crossbar, where you removed the sound bar.

1. Un-bolt Satellite Antenna and separate it's wire from other wires by removing the tape holding them together.
2. Free long enough wire to relocate the satellite antenna to front windshield frame (above driver side sun visor)
3. Pre-assemble your antenna to the bracket using the short M6 stainless bolt provided (you can also use the factory bolt)
4. Using the thick washer as a spacer between bracket and windshield frame, install the Antenna Relocation Bracket to the hole on the windshield frame with the longer M6 bolt, washer, and flange nut.

5. Connect the antenna and tug the wire behind the trim panels.

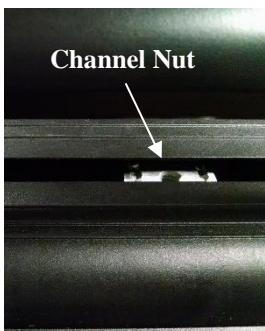


K- REINSTALL SOUNDBAR AND FACTORY PLASTIC TRIM PIECES

1. Attach electric connectors and re-bolt the soundbar into place.
2. Trim the corner of B-pillar trim pieces using a pair of scissors/snips. This cut is needed to clear front internal bracket A. See pictures.
3. The trim pieces will clip back into place.

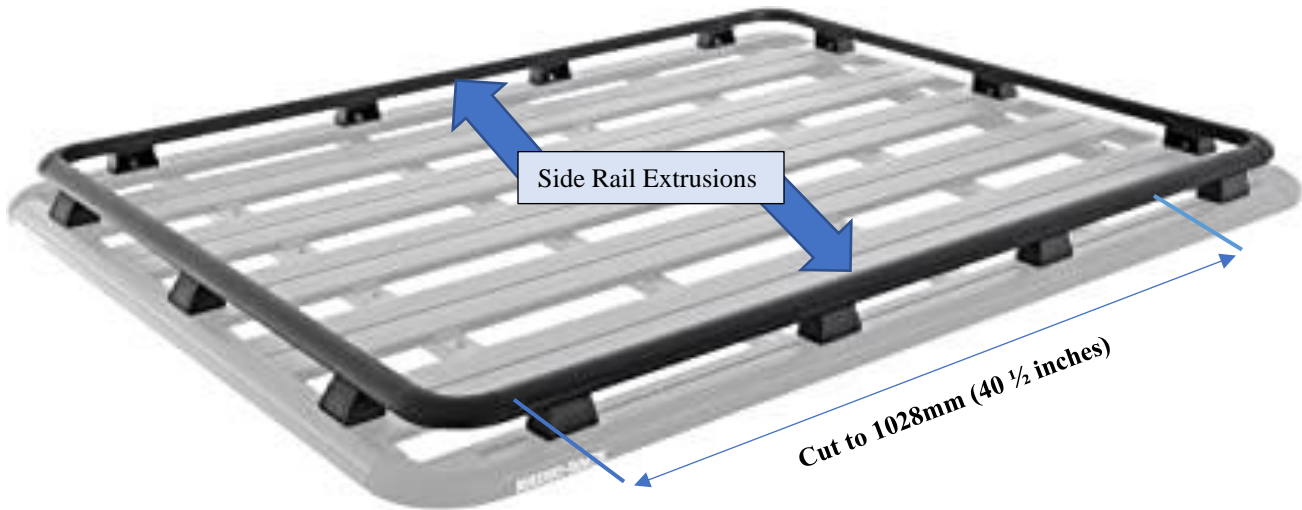
L- INSTALL THE SIDE LADDER (OPTIONAL)

1. Insert two M8 Channel Nuts in the Rack Platform side bar through the access slot in the back. see pictures bellow.
2. Place the Ladder over the side bar, align Channel Nuts and loosely secure with M8 Stainless Steel Bolts and Washers.
3. Align the bottom of the ladder to the holes on the Ladder Bracket you installed in step (H) and loosely secure with M8 Stainless Steel Bolts, Washers and nylock nuts provided. Do not tighten for now.
4. Check that top of the Ladder seats flat on the Platform side bar and tighten the bolts.
5. Align the bottom brackets and tighten using an Allen Key and a 13 MM wrench – you may need to push or pull on the ladder leg to align.



M- RAIL KIT (OPTIONAL ACCESSORY)

1. **Full Rail Kit** requires custom modification to fit.
2. Identify the two "side rail extrusions" (item #2 on the manufacturers install guide)
3. Measure and mark those rails to **1028mm (40 ½ inches)**
4. Cut the rails as straight and level as possible. We recommend using an angle grinder with cut-off wheel or a hacksaw.
5. File cut edges to remove burrs, use touch-up paint on bare surfaces.
6. Assemble and install rail kit according to the instructions provided by manufacturer of rail kit.



Your installation is complete. If you have questions regarding this installation, please contact us at info@maximus-3.com or call 248 821 6654.

MAXIMUS-3



WARNING



Limited Warranty

We offer Limited Warranty on products engineered and manufactured by MAXIMUS-3.

Our **Warranty** covers all workmanship, material and paint/finish defects for a period of 1 year (12 months) from the time of initial purchase.

All Maximus-3 aftermarket products and components must be installed as the manufacturer instructs. Maximus-3, LLC will not be responsible for any modification, improper installation, alteration, tampering, neglect, abuse or misuse of our products. Only use Maximus-3 installation guide to add, alter, or fabricate factory parts to incorporate Maximus-3 products. We will be happy to answer any questions concerning the design, function, and correct use of our products by calling 248-821-6654. It is ultimately the user's responsibility to have all fasteners properly retorqued after the first 100 miles and then every 3,000 miles thereafter. Tire carrier must be inspected for looseness every 1,000 miles. Using your vehicle off-road will put extreme stress on the vehicle and components. After driving off-road, always check for damage and wear to components, accessories, and equipment. Completely inspect your vehicle including wheels, tires, tire carrier, roof rack, and front set up. Check all threaded fasteners for looseness. Re-torque if necessary to the required specifications. Check and remove any accumulated dirt, mud rock, or debris to preserve powder coat finish/rust prevention.

MAXIMUS-3 provides detailed installation instructions for every product. It is the responsibility of the purchaser / installer to ensure these instructions are followed properly. MAXIMUS-3 will not be responsible for damages caused by misuse, altered or improperly installed products.

MAXIMUS-3 will not cover paint or labor costs for damaged items. Warranty is not transferable and covers all items ordered on or after December 1, 2012 with a valid original receipt.

Warranty covers all components manufactured by MAXIMUS-3 unless otherwise specified on individual product listings.

3 Year Manufacturer Warranty

Maximus-3 products are warranted to be free from structural defects. All metallic components will carry 3-year manufacturer structural warranty. All warranty claims shall be issued in replacement of the original part or in-store credit. No refunds will be issued in cash, check or credit card payments.

ANY PACKAGES BEING SENT/RETURNED TO MAXIMUS-3 WITHOUT RETURN MERCHANDISE AUTHORIZATION (RMA) NUMBERS WILL BE REFUSED AND RETURNED TO SENDER.

RETURN POLICY

(Procedures for Returning or Exchanging Product)

PRODUCT MUST BE RETURNED TO THE ORIGINAL PLACE OF PURCHASE – Please refer to your original invoice. Returns and Exchanges

At MAXIMUS-3 we strive to get your order to you complete, undamaged and 100% correct. Your satisfaction is guaranteed. Products can be returned within 15 days of shipment as long as they are unused, uninstalled, unpainted and in new and saleable condition. Returned products need to be in their original packaging with all parts and instructions included. All returns of non-defective, non-damaged or special-order parts are subject to a 15% restocking fee, unless we made an error.

All returns require a "Return Merchandise Authorization" (RMA) number from MAXIMUS-3 or one of our Distributors.

Whether we have made an error, you wish to exchange something, or there is a warranty claim, an RMA number is required. This number must be written on the outside of the returned package. Please allow five (5) business days for refunds to appear on your credit card statement. **No returns will be accepted on modified, "Custom" or "Special Order" items.** Item(s) must be received within 30 days of the RMA issue date; otherwise the Return Merchandise Authorization will be voided.

Damaged Merchandise

Upon receiving your order, open the carton(s) and thoroughly inspect the contents. If any package arrives and shows signs of external damage, you may choose not to accept it. You may refuse it and require your seller to advise you of their procedure to follow. If there was damage during shipment, contact us so that a claim can be filed. Please keep all packaging materials should the carrier wish to inspect them.

Truck Freight Shipments

It is imperative to make a note of any damage on the delivery receipt at the time of delivery. **Open and inspect** the merchandise carefully **before** signing the delivery receipt. We can only initiate claims if the damage was noted at the time of delivery. Freight costs are all based on shipments to commercial addresses (with a dock), if you require shipment to a residential address, additional charges may be applied to the order total.

Products

Product specifications, availability and pricing are all subject to change without notice. National, State, Provincial or local laws and regulations may prohibit the removal or modification of stock vehicle components, or the addition of some of our products for on road use. It is the responsibility of the purchaser to ensure that the use of purchase products follows all laws and regulations.