

# MAXIMUS-3



JL RUBICON - STEEL BUMPER GROUP

## D-RING LOOPS

**THIS OPTIONS IS NOT COMPATIBLE WITH OFF CENTER WINCH SETUP**  
**THIS PRODUCT IS DESIGNED TO WORK WITH MAXIMUS-3 JL RUBICON WINCH MOUNT ONLY**  
**FITS 3/4" D-RING PIN**

### INSTALLATION GUIDES

PLEASE MAKE SURE YOU READ AND UNDERSTAND THE ENTIRE INSTALLATION GUIDE BEFORE YOU START. WE EXPECT YOU TO HAVE BASIC MECHANICAL ABILITIES TO PERFORM THIS INSTALLATION.

WE RECOMMEND THAT YOU SEPARATE AND IDENTIFY ALL THE PARTS AND HARDWARE KITS YOU RECEIVED WITH YOUR SHIPMENT BEFORE YOU PROCEED TO DISASSEMBLE YOUR BUMPER.

#### Parts List:

JL D-Ring Loop LHS  
JL D-Ring Loop RHS

#### Qty

1  
1

#### Hardware Component List:

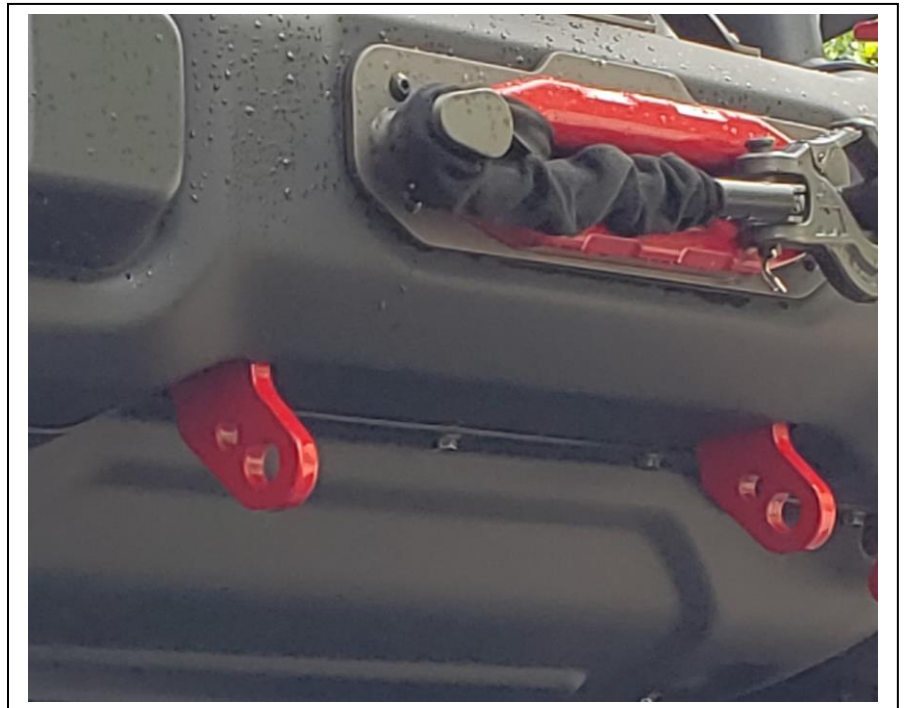
M10 Hex Head Bolts  
M10 Flat Washers – Zinc Plated  
M10 Flanged Nuts

#### Qty

8  
8  
8

#### Tools Required:

Metric Drive Sockets/Spanners: (15MM, 16MM)  
Drive Wrench  
Driller and Drill Bits (1/8" bit)  
Hole-Saw Diameter 1.25"  
Cut-off Wheel (Grinder)



### INSTALLATION STEPS

**(1)- REMOVE THE SKID PLATE**

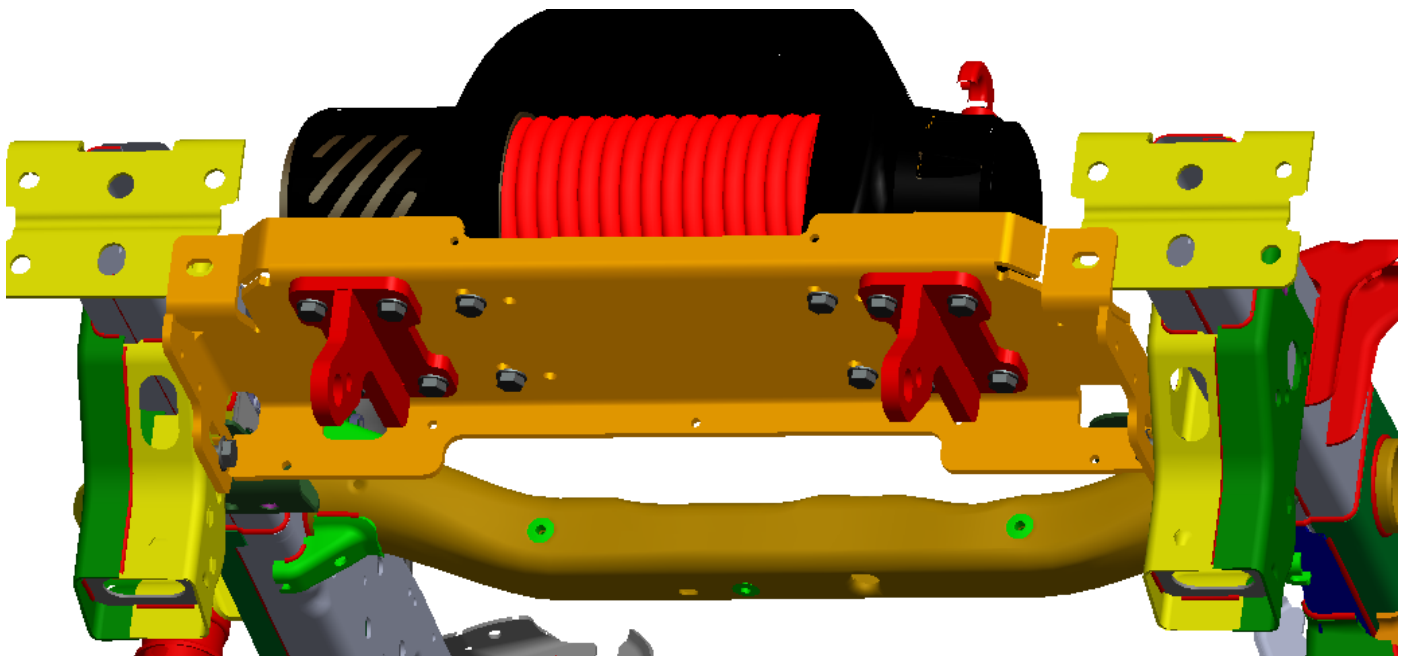
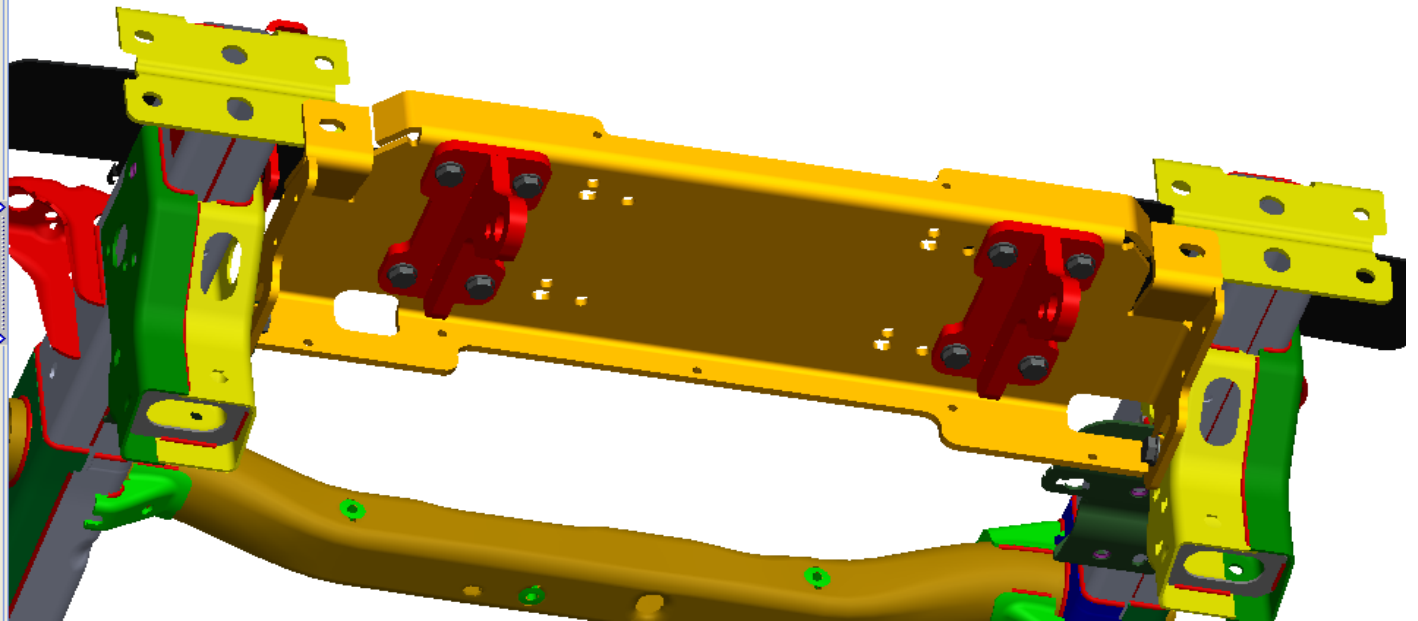
**(2)- REMOVE THE FRONT BUMPER**

**(3)- INSTALL MAXIMUS-3 WINCH PLATE (per Winch Plate Installation Guide)**

#### (4)- INSTALL THE D-RING LOOPS:

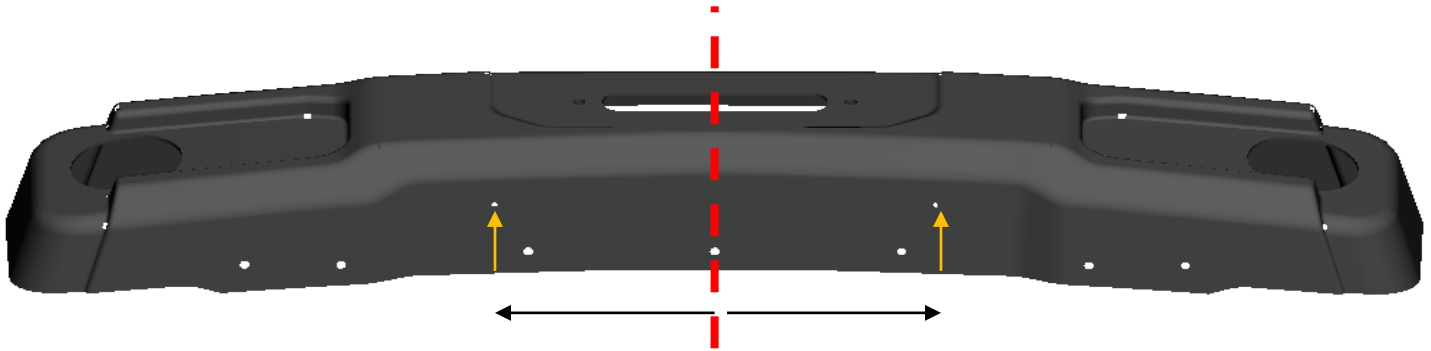
Note: It tends to be easier to install the D-Ring Loops (DRL) before bolting down the winch. But in most cases, you can install the D-Rings with the winch already bolted down.

- The DRL mount to the outermost holes in the winch plate. (see below)
- The DRL are side specific. Driver & Passenger side
- Use the provided hardware 8x M10(bolts/washers/nuts)
- Torque to 35 ft/lbs
- Proceed with winch installation - come back to this install guide before modifying & re-installing the bumper



#### (5)- MODIFY THE FRONT BUMPER:

- Centerline = use the bumper's center skid-plate hole (dashed line in picture below)
- Mark lines 212mm left & 212mm right of bumper's centerline (see picture)
- Along these new lines, mark centerpunch location 80mm up from bumper's edge. (see picture)



- Confirm/Measure drill locations to be 424mm apart. Then Centerpunch and Drill Pilot Holes
- Drill holes using 1.25" hole saw
- Draw tangent lines and cut them out using hand cut-off wheel
- Deburr edges and paint to prevent rust



**(5)- RE-ASSEMBLE THE BUMPER:**

**Finish Installing Winch (per instructions included with Winch Plate) & Re-Install your front bumper.**

Your installation is complete. If you have questions regarding this installation please contact us at [info@maximus-3.com](mailto:info@maximus-3.com) or call 248 821 6654.